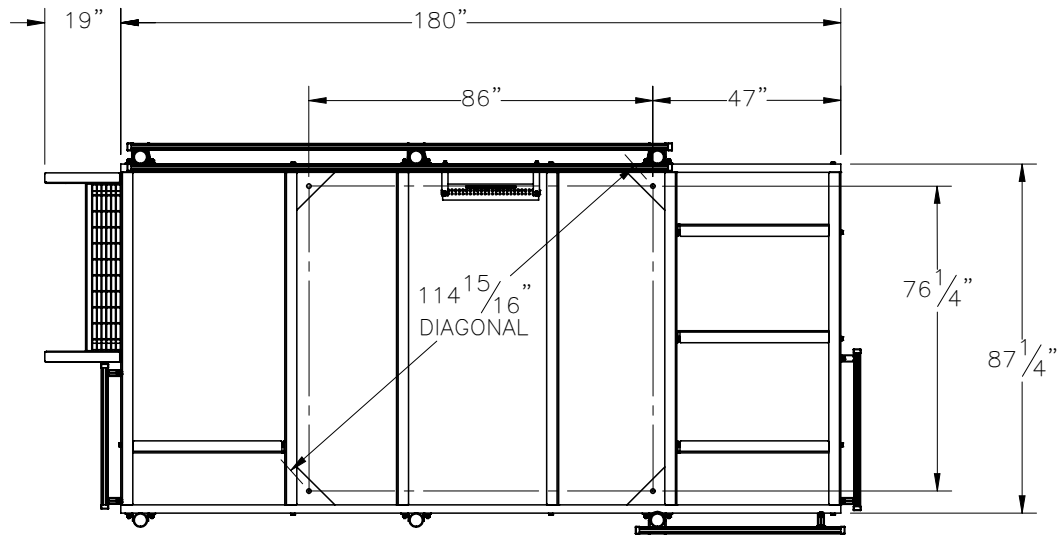
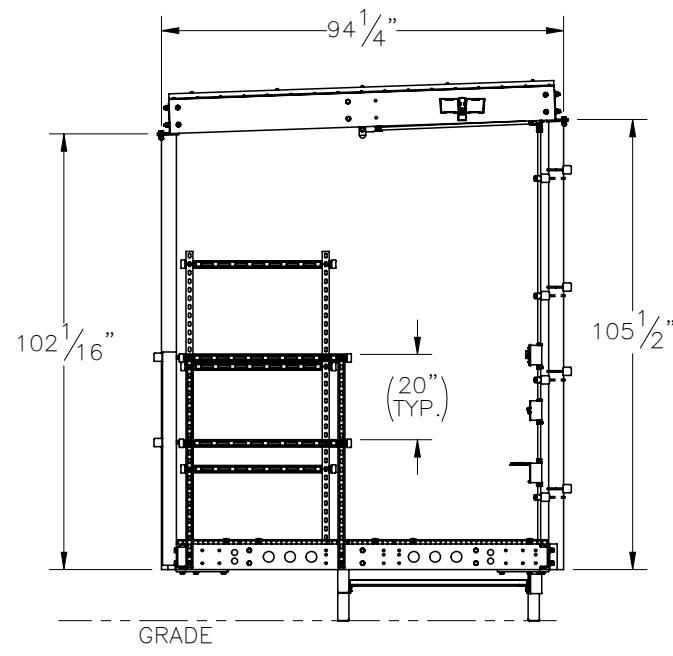
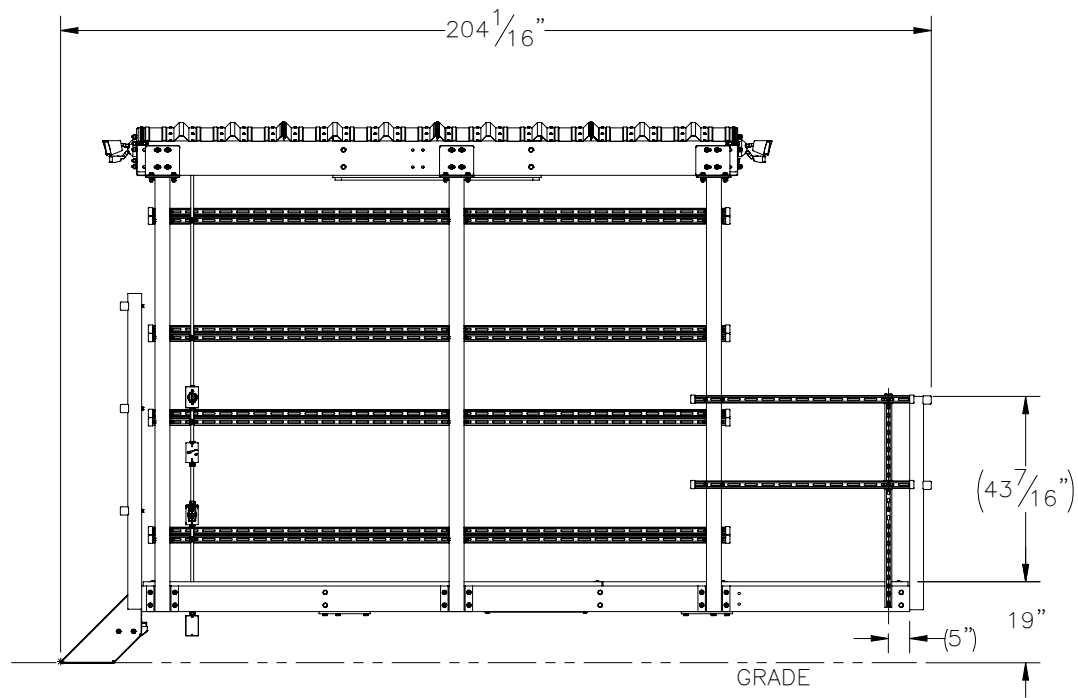


THE INFORMATION CONTAINED IN THIS DRAWING IS THE SOLE PROPERTY OF ELECTRO MECHANICAL INDUSTRIES, INC. ANY REPRODUCTION IN PART OR WHOLE WITHOUT THE WRITTEN PERMISSION OF ELECTRO MECHANICAL IND., IS PROHIBITED.

REVISIONS					
REV.	DCN #	DESCRIPTION	DATE	BY	APPROVED
23	01205	ADDED RODENT GUARD P-006-606.	01/04/2023	JTR	JPB



CANOPY & GRATING
HIDDEN FOR CLARITY




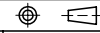
ITEM NO.	QTY REQD	PART NUMBER	DESCRIPTION	LENGTH	WEIGHT
1	1	1001-0020-0056	EMERSON BOLT TOGETHER PLATFORM 87" X 180"		1600.8
2	1	1001-0030-0029	BOLT TOGETHER CANOPY 140.875" X 87.1875"		931.9
3	1	1003-0020-0002	1 TREAD STAIR ASS'Y (42" WIDE)		55.4
4	1	1000-0000-0119	ELECTRICAL KIT		20.8
5	3	P-006-282	VERT. HANDRAIL, UNISTRUT	50"	12.2
6	3	P-006-283	SHORT SIDE MOUNTING RAIL, UNISTRUT	36"	4.1
7	8	P-006-284	LONG SIDE MOUNTING RAIL, UNISTRUT	136"	15.6
8	2	P-006-286	LONG SIDE HANDRAIL, UNISTRUT	52"	6.0
9	2	P-006-285	SHORT SIDE HANDRAIL, UNISTRUT	40"	4.6
10	2	P-006-281	VERT. MOUNTING RAIL, UNISTRUT	74"	18.0
11	4	A-000-250	CORNER FOOT MOUNT ASSY, 2 LEVELING WASHERS		14.1
12	1	1000-0000-0075	GROUND BAR KIT		8.84
13	12	002-0BG-0258	HB, .375-16 X 4.50 LG., PT X 1.00, GR. 5, HDG	4.50	0.159
14	64	002-0NG-0018	NUT, HEX, .375-16UNC, GR 5, GALV		0.02
15	76	002-0FW-G005	WASHER, FLAT, .375, GALV		0.01
16	64	002-0LW-G005	WASHER, SPLIT LOCK, .375, GALV		0.01
17	26	002-00U-G046	U-BOLT, .375-16 X 1.75 THD LNG., 3.625 I.D X 5.25 HT, GALV		0.052
18	2	002-0SW-H001	WASHER, SQUARE, .50" ID X 2" X .25"		0.27
19	30	309-000-0008	STRUT CHANNEL CAP 1.625" X 1.625"		0.05
20	10	002-0BG-0010	HHB, .500-13 X 1.50 LG., PT X 1.00, A325, HDG	1.50	0.14
21	12	002-0BG-0012	BOLT, HX HD, .500-13UNC X 1.75 LG, ASTM A325, GALV		0.2
22	44	002-0FW-G002	FW, .50, F436, HDG		0.02
23	22	002-0LW-G002	WASHER, SPLIT LOCK, .500", GALV		0.01
24	22	002-0NG-0010	NUT, HEX, .500-13UNC, GR 2H, GALV		0.06
25	1	P-006-606	RODENT GUARD	36"	2.7

23

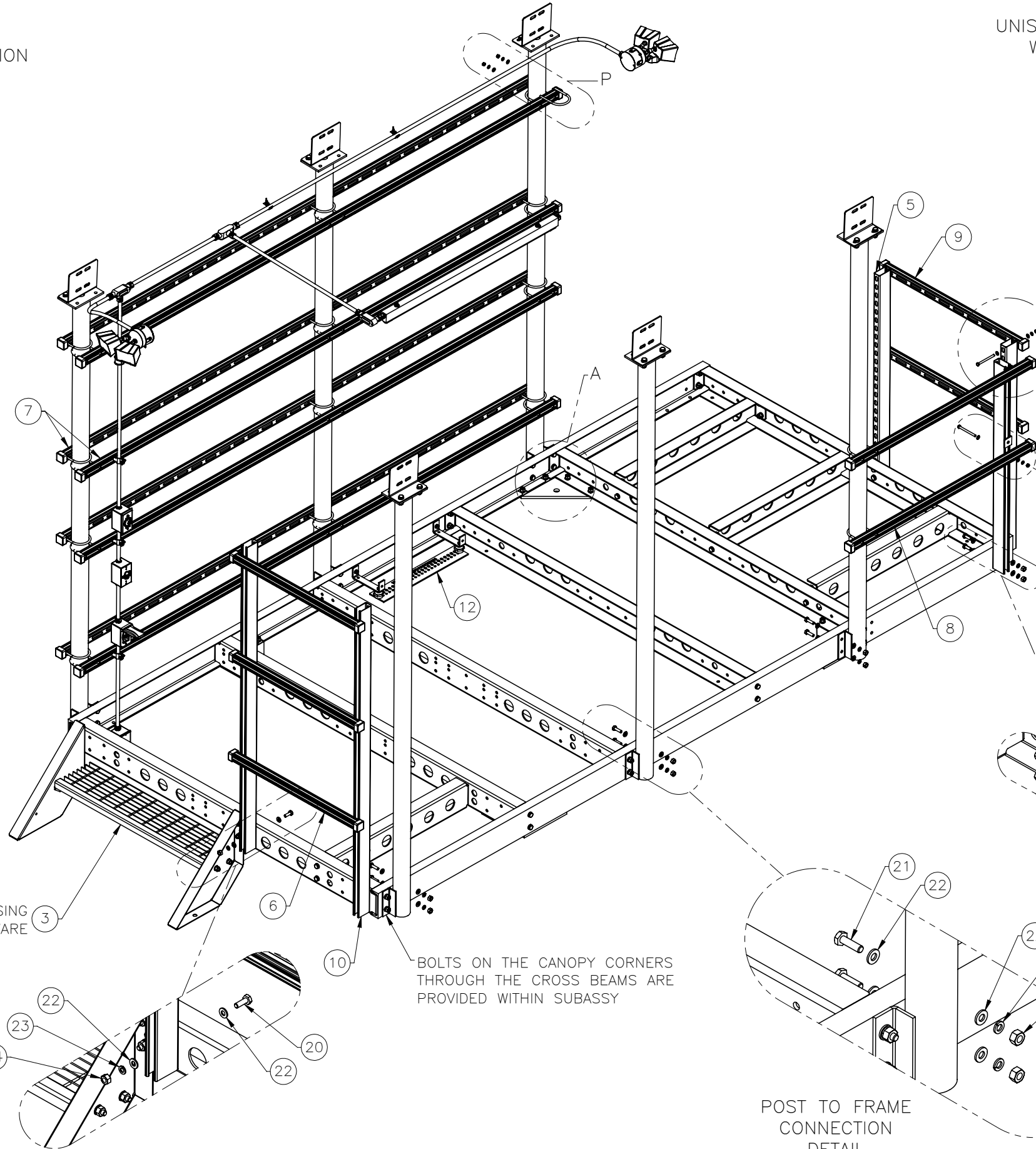
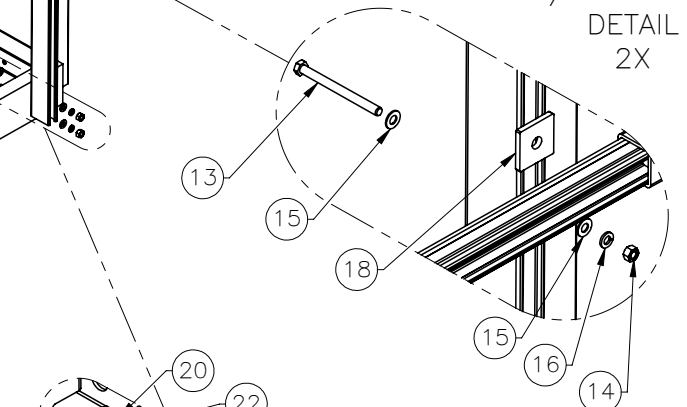
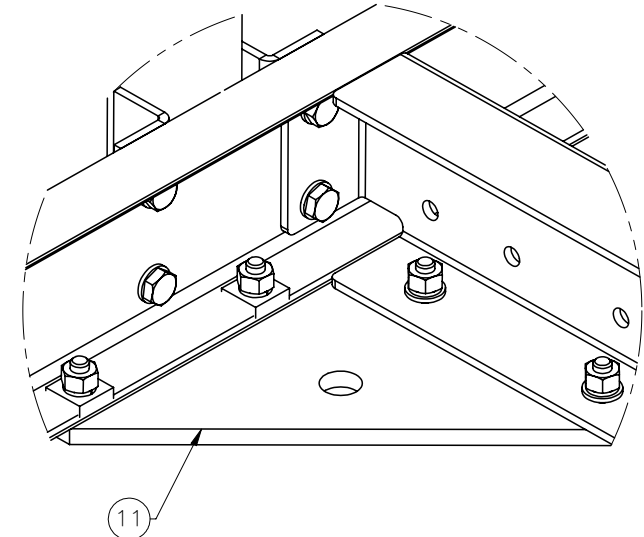
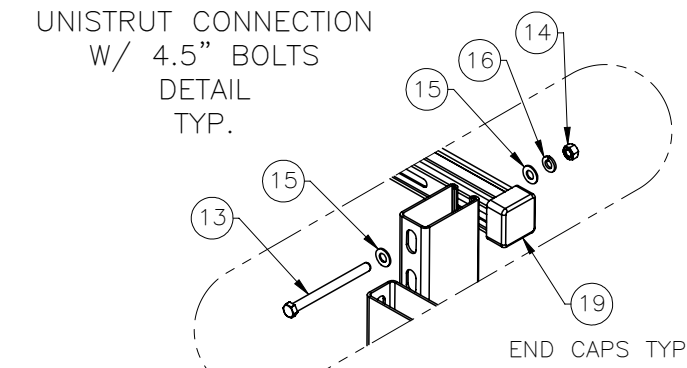
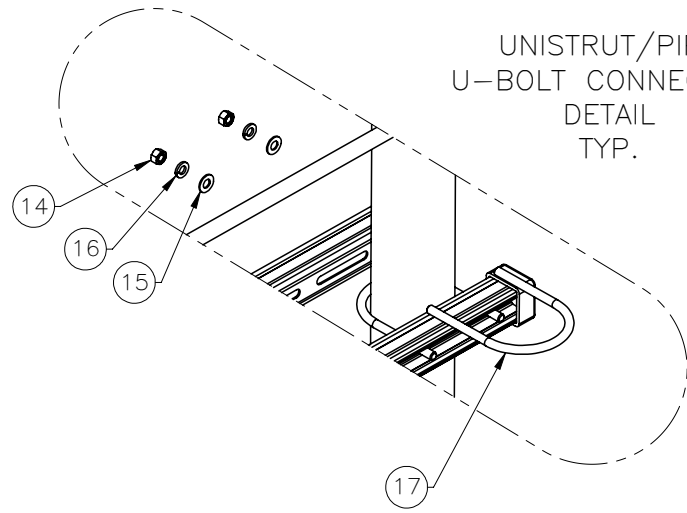
NOTES:

1

OPTIONAL PLATE PROVIDED IF REQUIRED FOR GENERATOR.

SURFACE FINISH <input checked="" type="checkbox"/> UNLESS OTHERWISE SPECIFIED		UNLESS OTHERWISE SPECIFIED DIMENSIONS ARE IN INCHES		APPROVALS		DATE		 ELECTRO MECHANICAL INDUSTRIES, INC. 11250 NEESEHAW DRIVE HOUSTON, TEXAS 77065 1-800-453-0050	
MATERIAL SEE PARTS LIST		TOLERANCES .0 ±.06 .00 ±.015 .000 ±.005		DRAWN J. CRITELLI		10/23/2018		TITLE: 87" X 180" BOLT TOGETHER PLATFORM	
THIRD ANGLE PROJECTION 		FRACTIONS ± 1/16 ANGLES ± .25°		CHECKER C. SANCHEZ		11/1/2018			
NEXT ASSY		USED ON		ENGINEER J. BREEN		11/24/2018			
APPLICATIONS		DRILLED OR PUNCHED ± 1/32 BURNED ± 1/32		PRODUCTION J. SUNDERLAND		11/24/2018		SIZE B	
								DRAWING NO. 1000-0010-0102	
								REV 23	
								SCALE: 1:45 WEIGHT: 2920.8 lbs. SHEET 1 OF 4	

CANOPY TOP HIDDEN FOR CLARITY



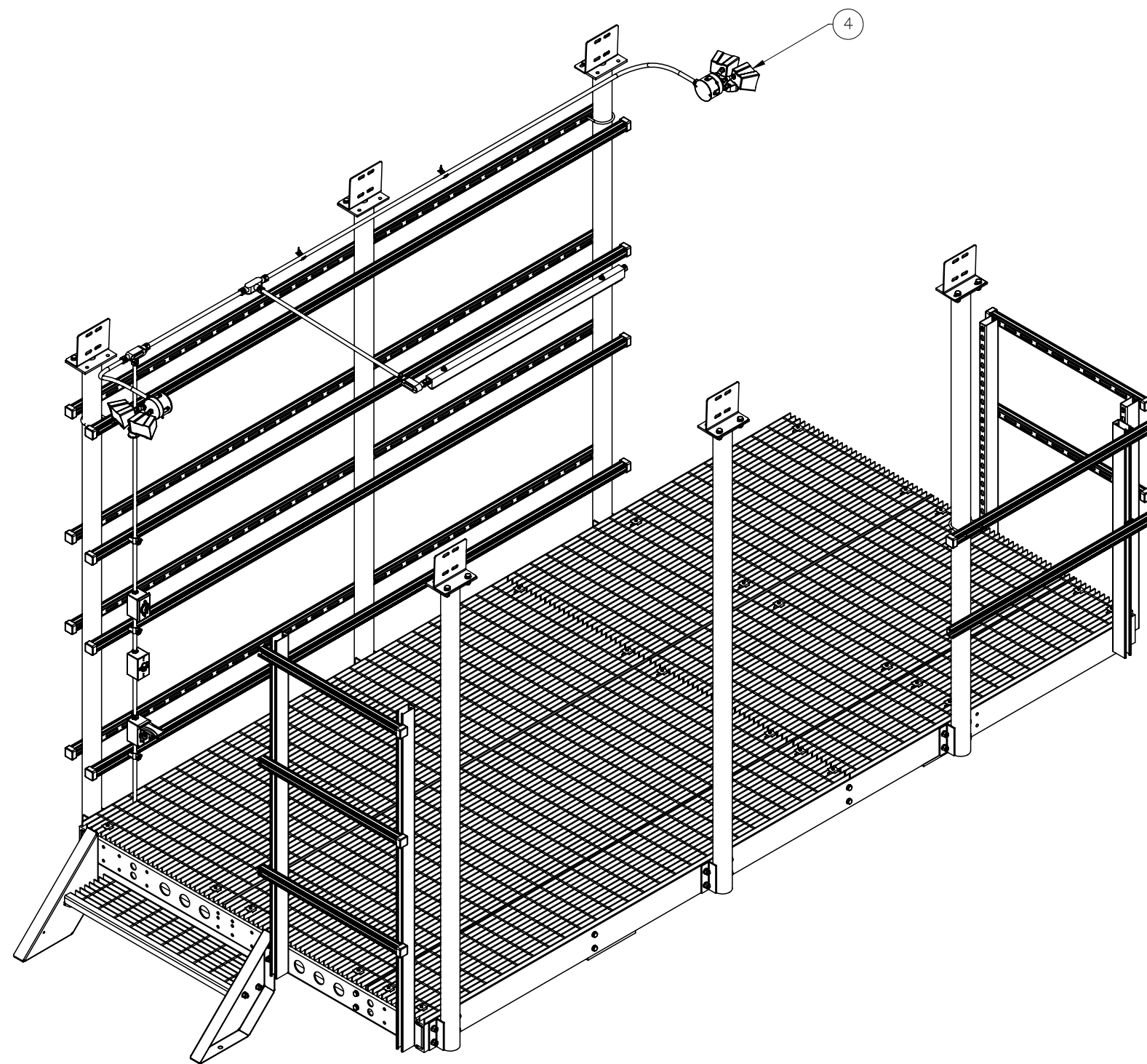
CONNECTS USING
SUBASSY HARDWARE

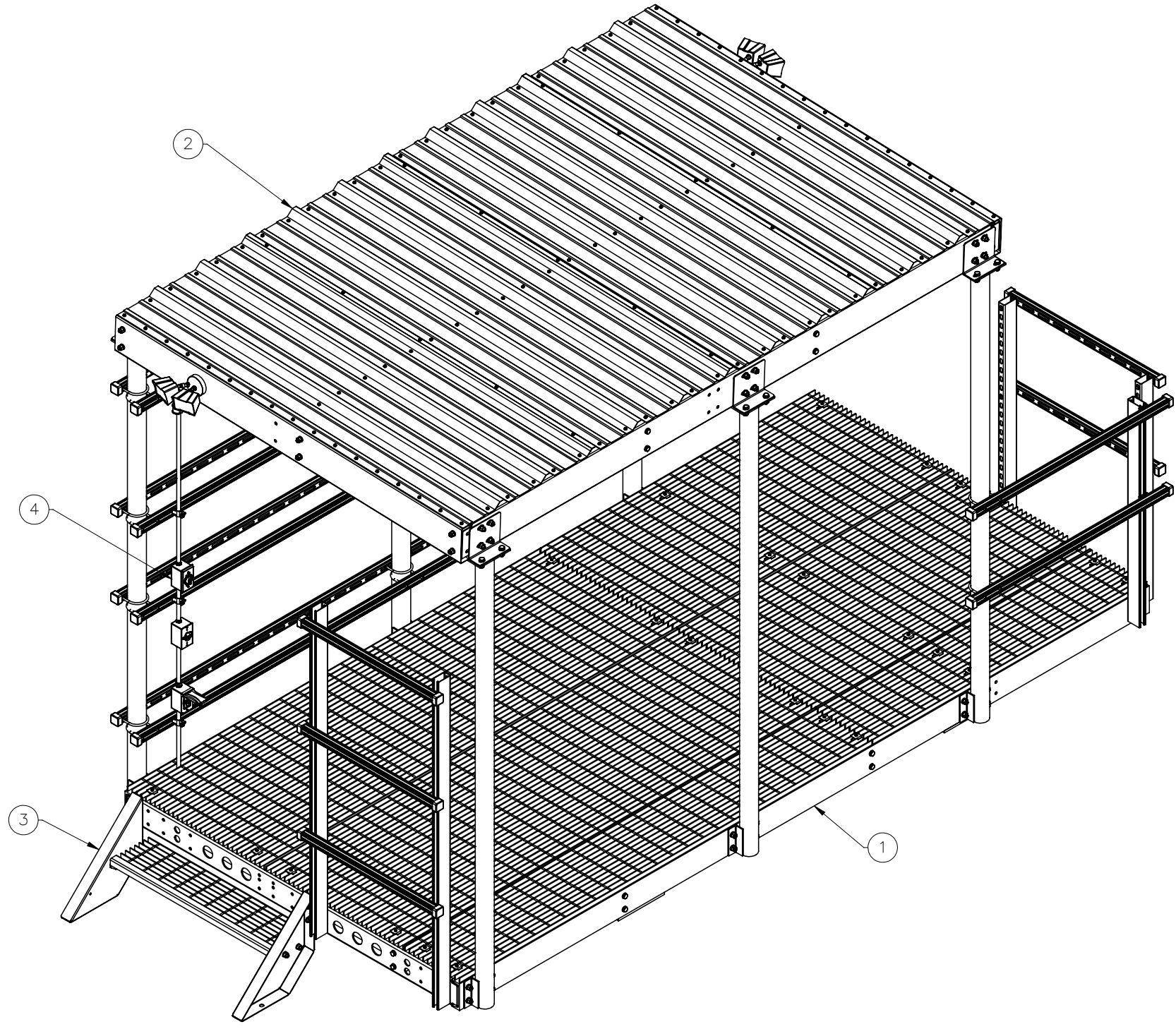
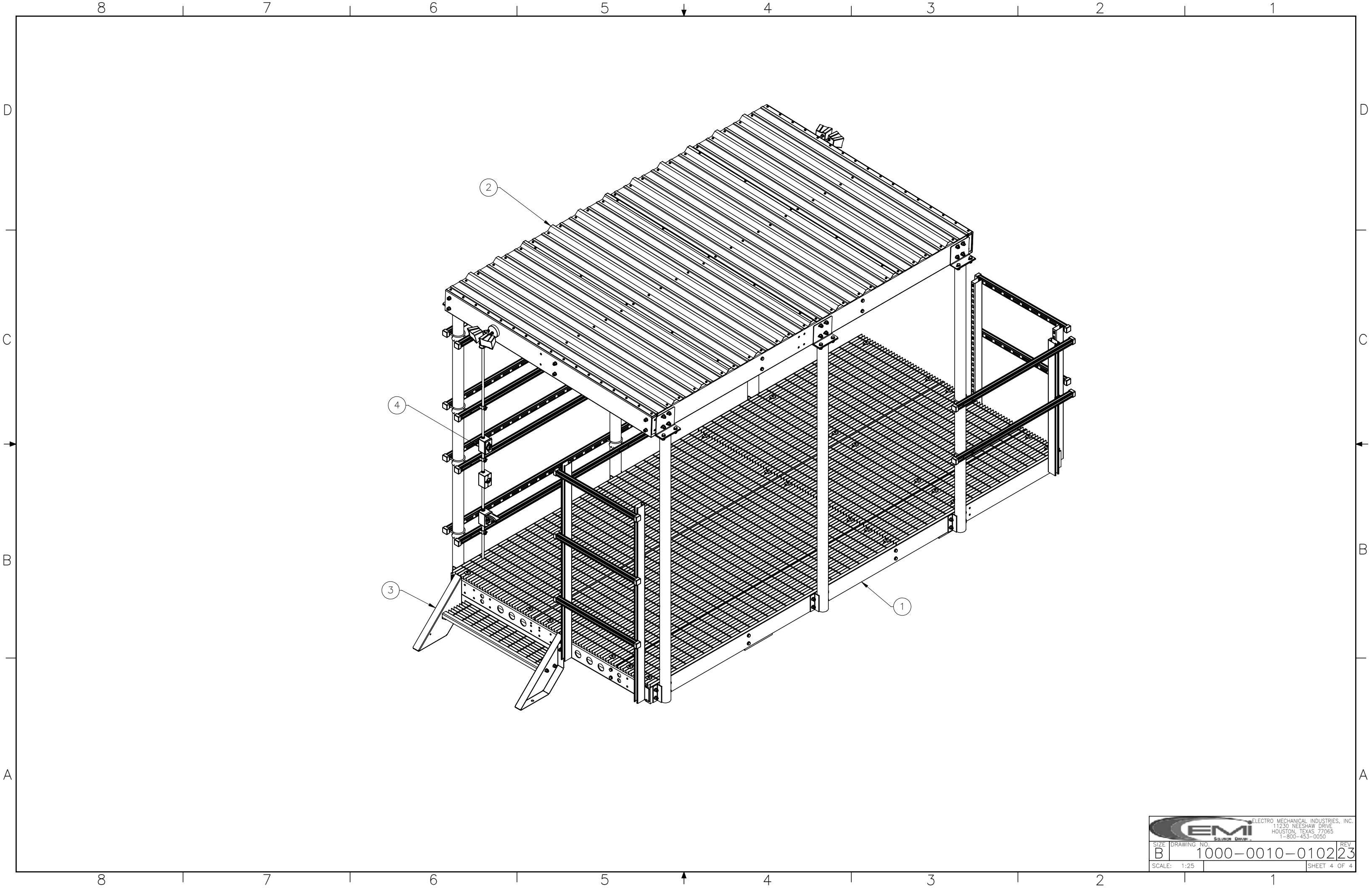
BOLTS ON THE CANOPY CORNERS
THROUGH THE CROSS BEAMS ARE
PROVIDED WITHIN SUBASSY


POST TO FRAME
CONNECTION
DETAIL
TYP.

UNISTRUT CONNECTION DETAIL
8X .5 X 1.5 LG HW

CANOPY TOP HIDDEN FOR CLARITY





		ELECTRO MECHANICAL INDUSTRIES, INC. 11230 NEESHAW DRIVE HOUSTON, TEXAS 77065 1-800-453-0050	
SIZE	DRAWING NO.	REV.	
B	1000-0010-0102	23	
SCALE: 1:25			SHEET 4 OF 4