

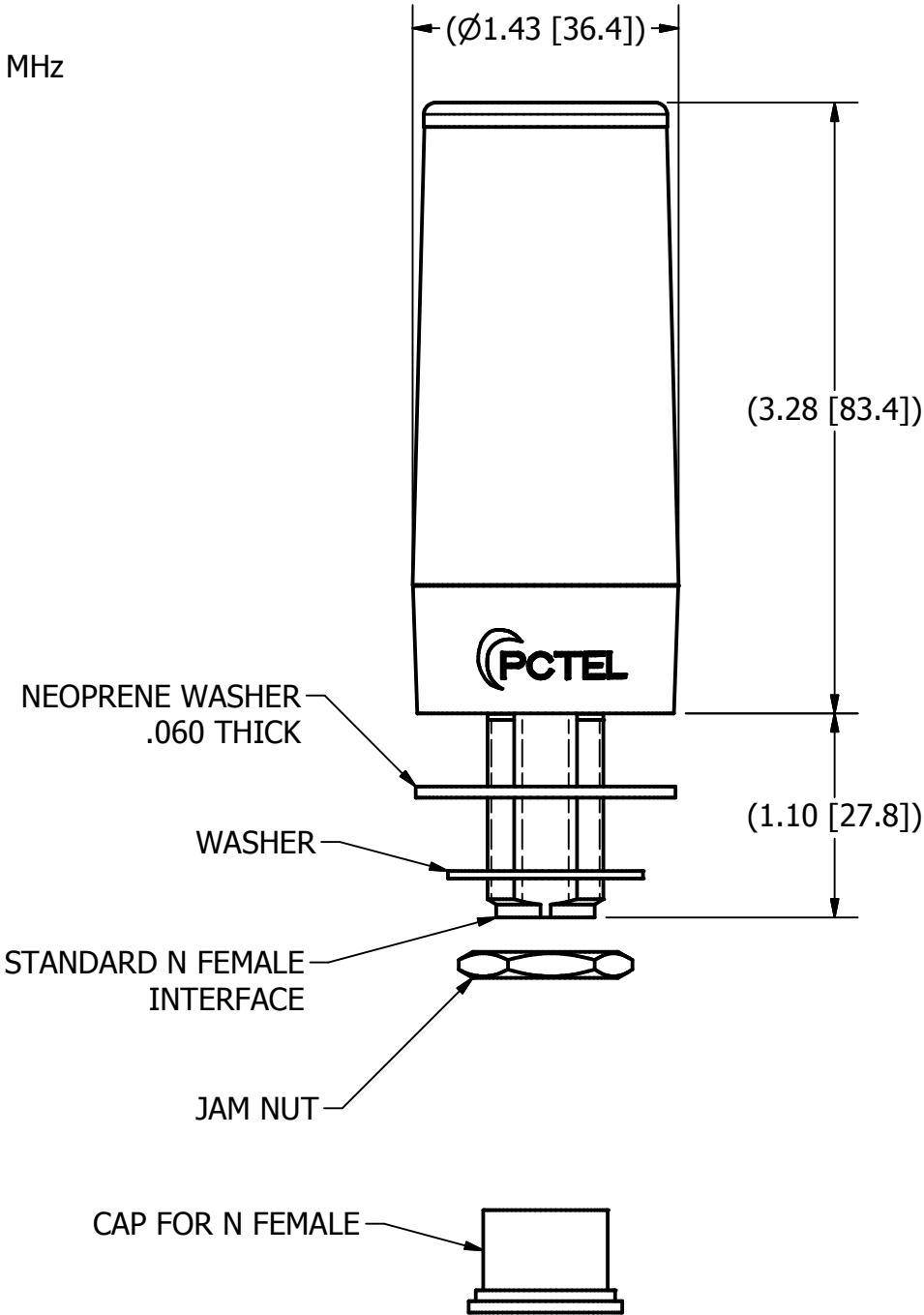
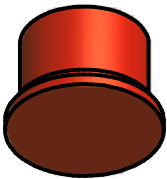
NOTES: UNLESS OTHERWISE SPECIFIED


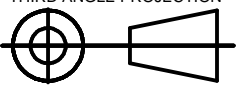
1. TEST PER ANTENNA ELECTRICAL SPECIFICATIONS.
(ANTENNA ONLY)

FREQUENCY RANGE: 698-1250 MHz, 1710-2170 MHz, 2300-2700 MHz
NOMINAL IMPEDANCE: 50 Ohms
NOMINAL GAIN: 3 dBi
MAX POWER: 150 WATTS
VSWR (MAX) < 2.5:1

2. DIMENSIONS IN PARENTHESIS ARE FOR REFERENCE
ONLY AND NO TOLERANCE IS IMPLIED.

REVISION HISTORY			
REV	DESCRIPTION	DATE	APPROVED
A	OUTLINE DIMENSIONAL DRAWING RELEASED	3FEB13	CP



UNLESS OTHERWISE SPECIFIED DUAL DIMENSIONING XX.Xin [XX.Xmm]		DRAWN IP	DATE 2/3/2015	 <div>PCTEL, INC. 471 BRIGHTON DRIVE BLOOMINGDALE, IL 60108 PH. 630-372-6800 FAX. 630-372-8077</div>
FOR TOLERANCES NOT SPECIFIED USE: X.X in $\pm .1$ in, X.XX in $\pm .01$ in, X.XXX in $\pm .005$ in [X mm ± 3 mm], [X.X mm $\pm .3$ mm], [X.XX mm $\pm .13$ mm] ANGULAR $\pm 1^\circ$, FRACTIONAL $\pm 1/64$		CHECKED	DATE	
THIRD ANGLE PROJECTION 		MATERIAL: SEE COMP. PRINTS	FINISH: SEE COMP. PRINTS	
PCTEL PROPRIETARY DATA THE INFORMATION AND/OR DRAWINGS CONTAINED IN THIS DOCUMENT IS CONFIDENTIAL AND PROPRIETARY TO PCTEL, INC. AND MAY NOT BE USED, REPRODUCED, IN WHOLE OR IN PART, OR MODIFIED IN ANY WAY WITHOUT THE EXPRESS WRITTEN PERMISSION OF AN AUTHORIZED REPRESENTATIVE OF PCTEL, INC.				DESCRIPTION ANTENNA, MOBILE, LTE CELLULAR, HIGH PERFORMANCE, RAILROAD, N FEMALE CONNECTOR
				DRAWING NO. ODD_BMLPV-MBLTE-HP
SIZE B		SCALE 1:1		SHEET 1 OF 1