

Mini-Com® Flush Mount Modular Patch Panels

SPECIFICATIONS

Flush mount modular patch panels shall consist of a metal panels with molded rear snap-in faceplates. Patch Panels shall accept all Mini-Com Modules for UTP, fiber or A/V applications and shall mount to standard 19" racks. Patch panels shall be available in 24-port and 48-port standard density. Select styles shall be available in white. Flush mount patch panels shall be easy to identify with pre-numbered ports. Angled patch panels shall be designed at an optimum angle to help route the cable.



TECHNICAL INFORMATION

Mounting options:	Mounts to standard 19" rack
Material:	Stamping is CRS and faceplate is ABS
Packaging:	Packaged with appropriate pre-installed snap in faceplates and a set of mounting screws (#12-24)

KEY FEATURES AND BENEFITS

Modular:	Accepts all Panduit Mini-Com® Modules to mix and match media types in the same panel
Angled design:	Minimize the need for horizontal cable managers by enabling patch cords to be routed directly into vertical cable managers which leads to increase closet density
Port and panel identification:	Pre-numbered ports with write on areas
Optional strain relief bars:	To help support and manage cables
Optional filler panels:	Flat and angled design fill unused rack openings to provide a clean and consistent look when used with any version of Panduit patch panels
Optional extender bracket:	Allows 19" patch panels to be mounted on a 23" rack

APPLICATIONS

Mini-Com Flush Mount Modular Patch Panels are ideal for multi-media applications; they accept all Mini-Com Modules. Flat and angled designs in various port densities available to fit most needs, include pre-numbered port identification. Angled patch panels are available for applications in which rack space is limited. The design allows cable to flow to each side of the rack, minimizing the need for horizontal cable managers and increasing the density of the rack space. Flush mount patch panels can mount on a standard 19" rack or a 23" rack when using the extender brackets PEB1 or PEB2.

Flat Style with ports grouped in 4

24-port, 1 RU:	CPP24FMW*
48-port, 2 RU:	CPP48FMW*
48-port, 2 RU:	CPP48FMVNSWBLY

Angled Style with ports grouped in 4

24-port, 1 RU:	CPPA24FMW*
48-port, 2 RU:	CPPA48FMW*

Flat Style with ports grouped in 6

48-port, 2 RU:	CPP24FM6BL
-----------------------	------------

Angled Style with ports grouped in 6

48-port, 2 RU:	CPPA48FM6BL
48-port, 2 RU:	CPPA48FM6VNSBLY

Patch Panel Accessories

Transitional cover: CPATC**

Angled filler panel 1 RU: CPAF1*

Angled filler panel 2 RU: CPAF2*

Flat filler panel 1 RU: DPFP1^

Flat filler panel 2 RU: DPFP2^

Extender Brackets

1 RU: PEB1

2 RU: PEB2

*Colors: BLY (Black) or WH (White)

**Colors: BL (Black) or WH (White)

^Colors other than Black: WH (White)

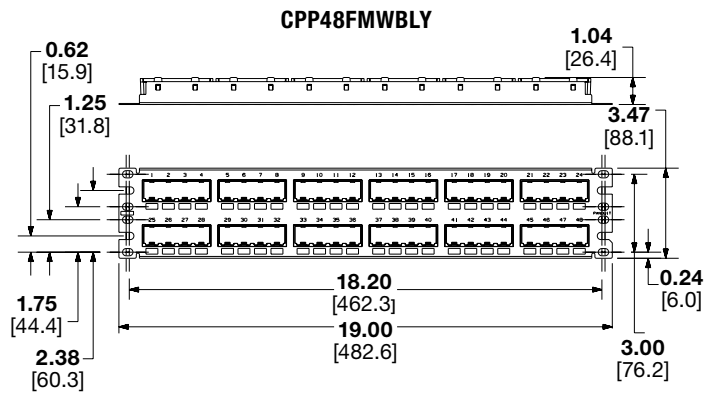
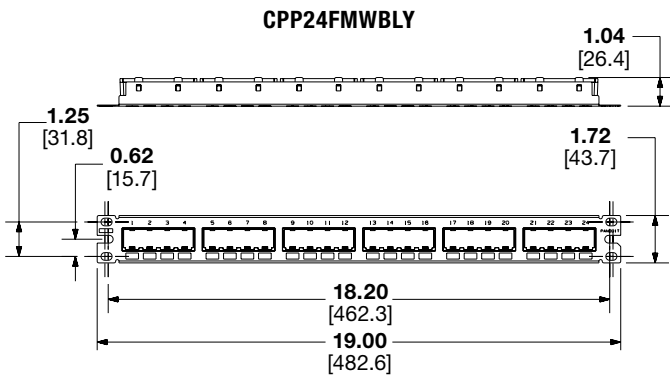
Note: White patch panels do not include the write-on detail box below the ports

Mini-Com® Flush Mount Modular Patch Panels

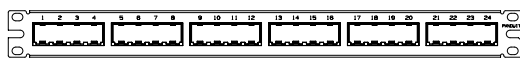
MINI-COM® FLUSH MOUNT MODULAR PATCH PANELS LABEL CHART

Part Number	Label Type	Laser/Ink	Laser/InkJet
CPP24FMWBLY	Adhesive	C252X030YPT	C252X030FJJ
CPP24FMWWH			
CPPA24FMWBLY			
CPPA24FMWWH			
CPP48FMWBLY			
CPP48FMVNSWBLY			
CPP48FMWWH			
CPPA48FMWBLY			
CPPA48FMWWH			
CPP48FM6BL			
CPPA48FM6BL			
CPPA48FM6VNSBL			

ENGINEERING DRAWINGS



CPP24FMWWH*



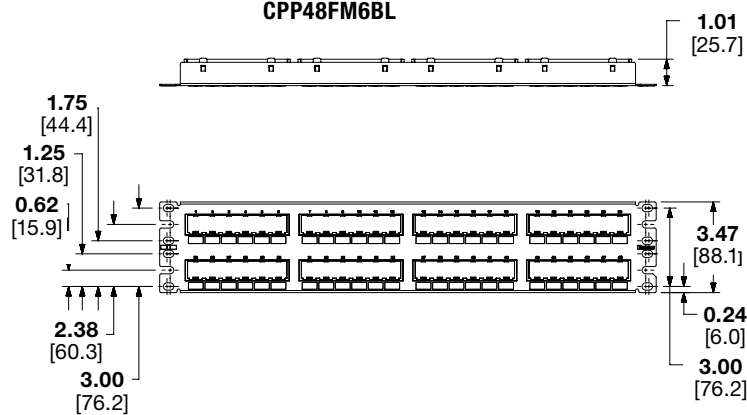
Dimensions are the same as CPP24FMWBLY

CPP48FMWWH*

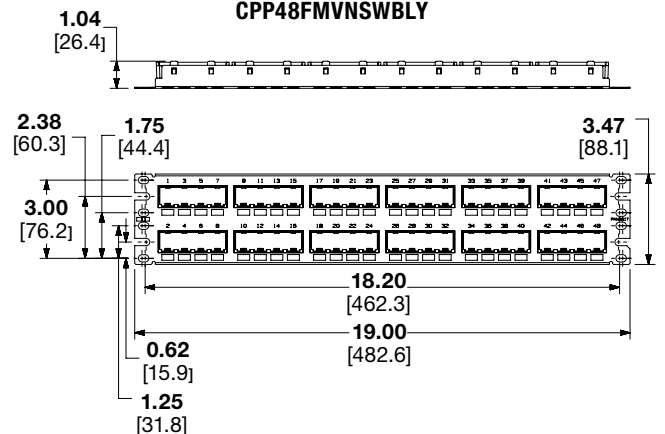


Dimensions are the same as CPP48FMWBLY

CPP48FM6BL



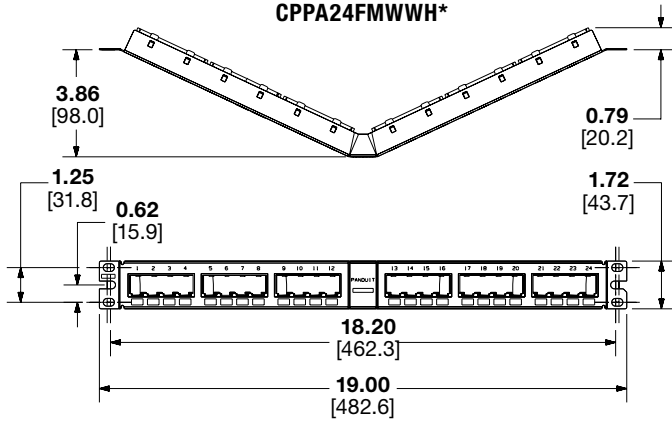
CPP48FMVNSWBLY



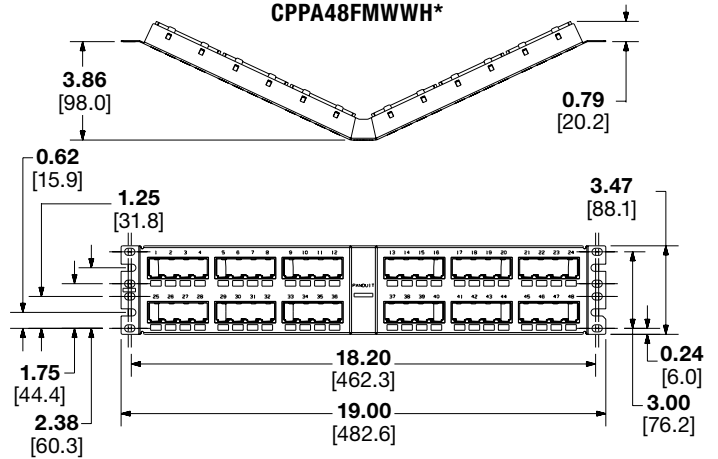
Mini-Com® Flush Mount Modular Patch Panels

ENGINEERING DRAWINGS

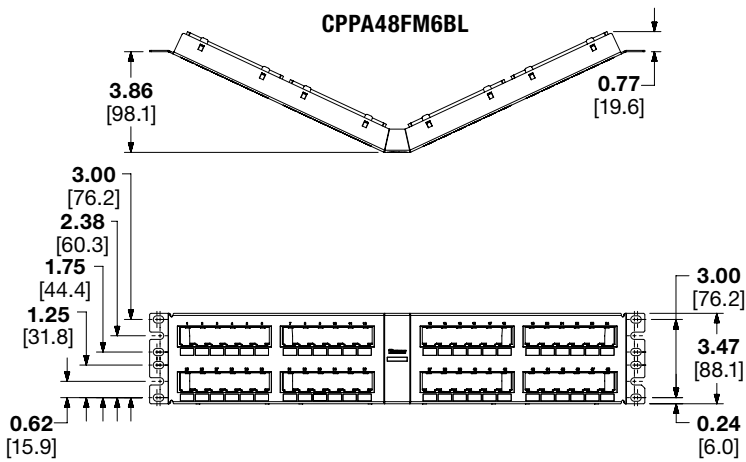
CPPA24FMWBLY
CPPA24FMWWH*



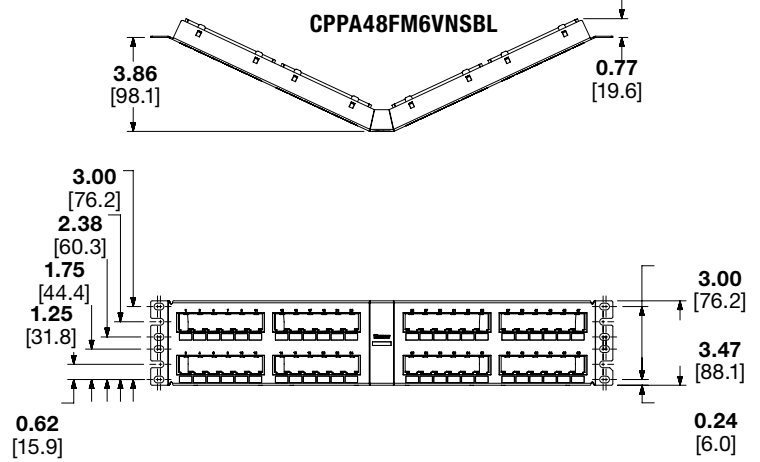
CPPA48FMWBLY
CPPA48FMWWH*



CPPA48FM6BL



CPPA48FM6VNSBL



Dimensions are in inches. [Dimensions in brackets are metric].

WORLDWIDE SUBSIDIARIES AND SALES OFFICES

PANDUIT US/CANADA
Phone: 800.777.3300

PANDUIT EUROPE LTD.
London, UK
Phone: 44.20.8601.7200

PANDUIT SINGAPORE PTE. LTD.
Republic of Singapore
Phone: 65.6305.7575

PANDUIT JAPAN
Tokyo, Japan
Phone: 81.3.6863.6000

PANDUIT LATIN AMERICA
Guadalajara, Mexico
Phone: 52.33.3777.6000

PANDUIT AUSTRALIA PTY. LTD.
Victoria, Australia
Phone: 61.3.9794.9020

For a copy of Panduit product warranties, log on to www.panduit.com/warranty

For more information

Visit us at www.panduit.com
Contact Customer Service by email: cs@panduit.com
or by phone: 800.777.3300

PANDUIT®

© 2024 Panduit Corp.
ALL RIGHTS RESERVED.
COSP595-WW-ENG
5/2024