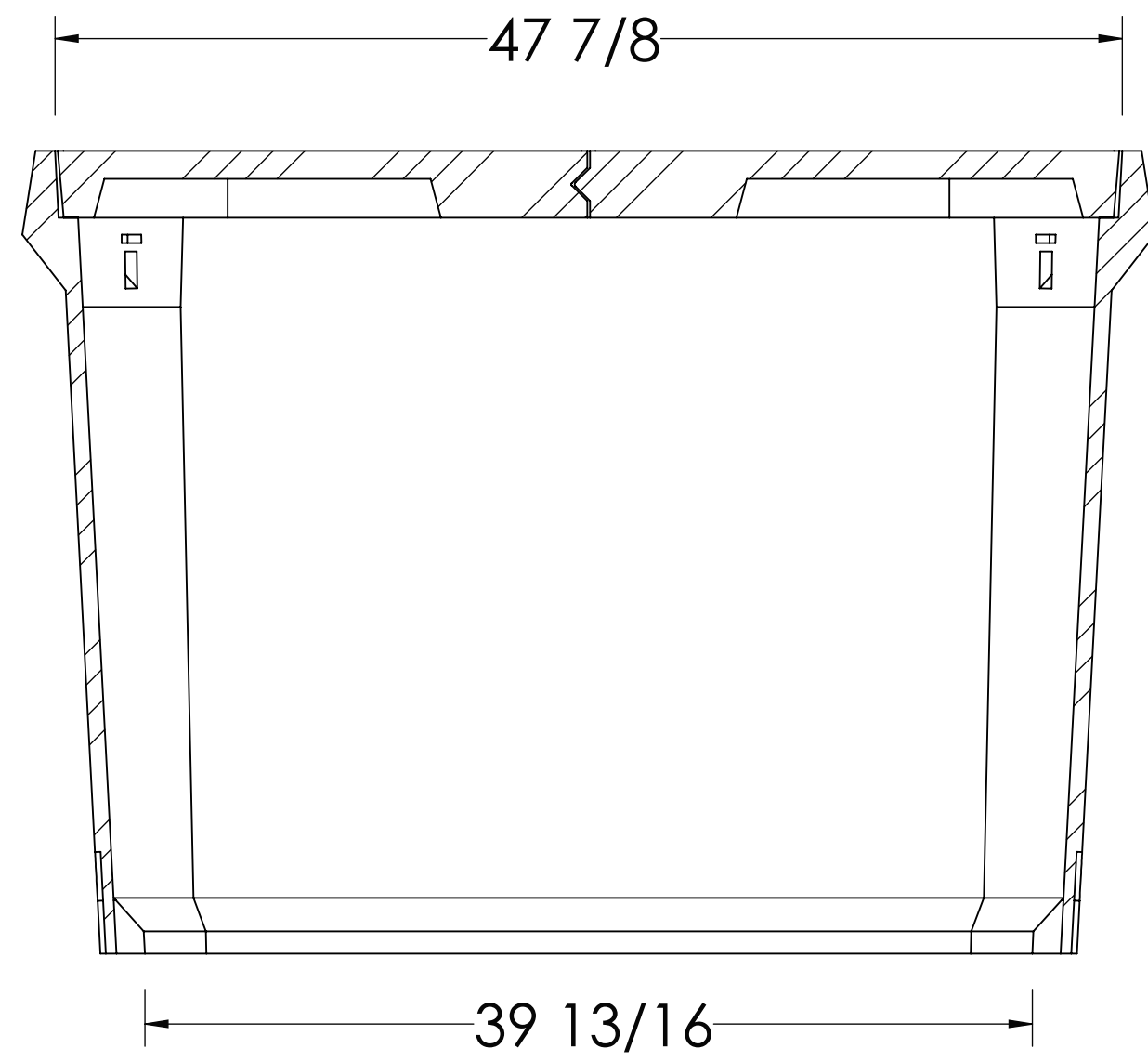
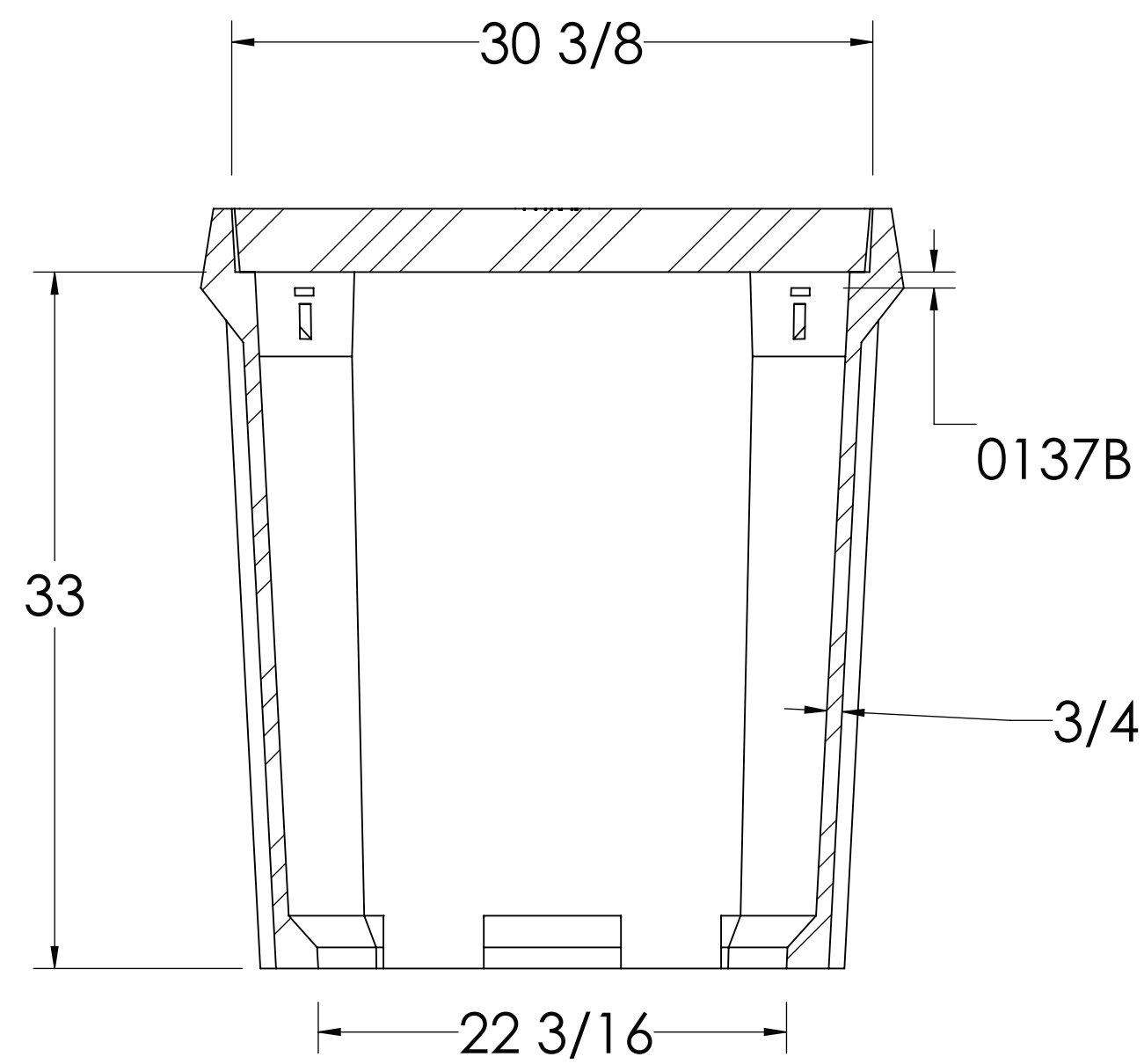


**NOTES (UNLESS OTHERWISE SPECIFIED):**

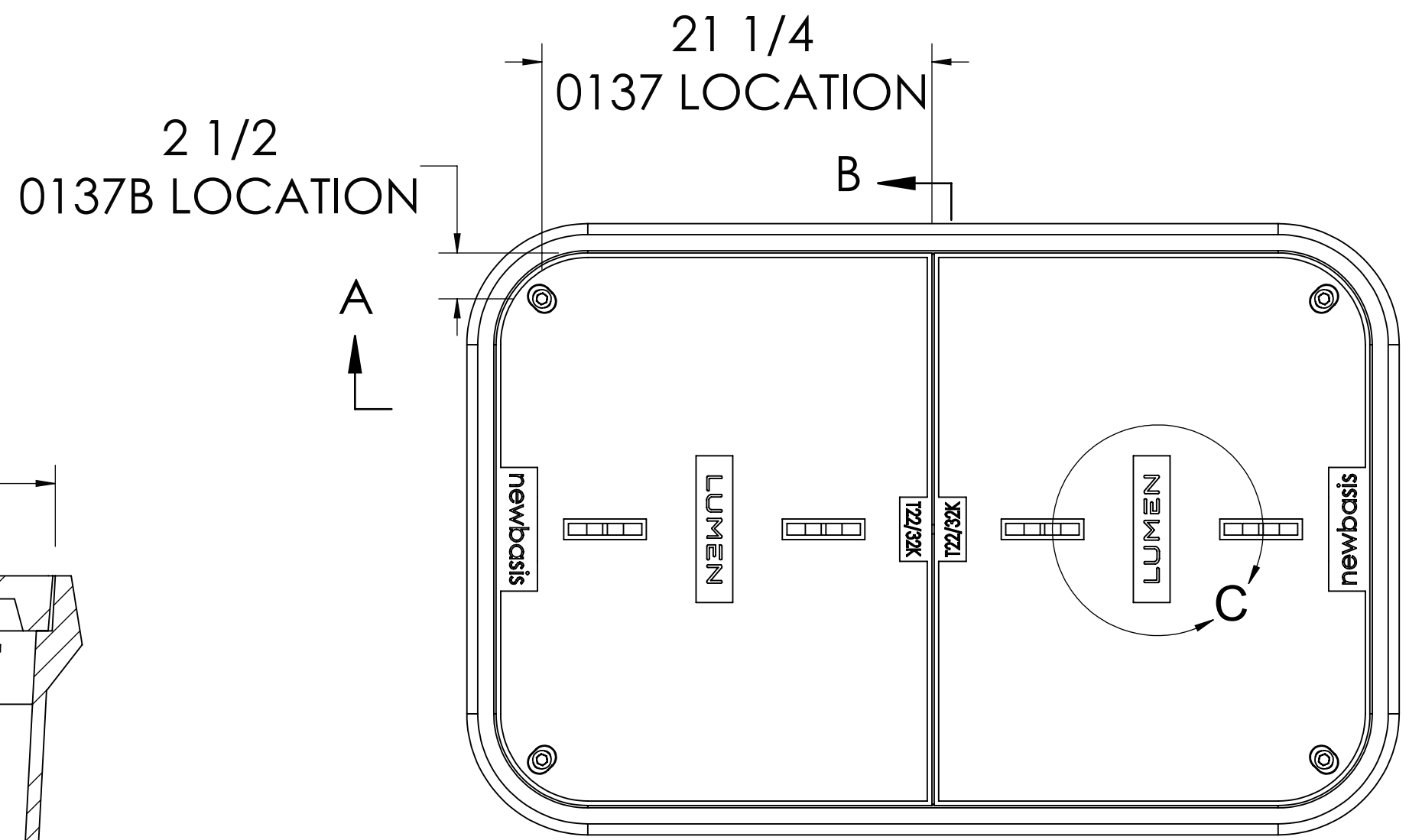
- A. POLYMER CONCRETE ASSEMBLY
- B. STRAIGHT SIDES
- C. NO FLOOR
- D. ANSI / SCTE 77 - T22/32K
- E. WUC 3.6
- F. 3/8" HEX BOLTS
- G. SKID RESISTANT COVER
- H. TWO PIECE COVER
- I. TELEPHONE EMS EMBEDDED IN COVER
- J. CUSTOM NAMEPLATE (**LUMEN**) CAST-IN
- K. MOUSEHOLE KNOCKOUTS - TWO EACH END
- L. STAMP ASSEMBLY PART NUMBER AS SHOWN
- M. ASSEMBLY WEIGHT: 656 LBS ± 5%
  - COVER WEIGHT (ITEM NO. 2): 111 LBS
  - COVER WEIGHT (ITEM NO. 6): 111 LBS
  - BOX WEIGHT: 433 LBS



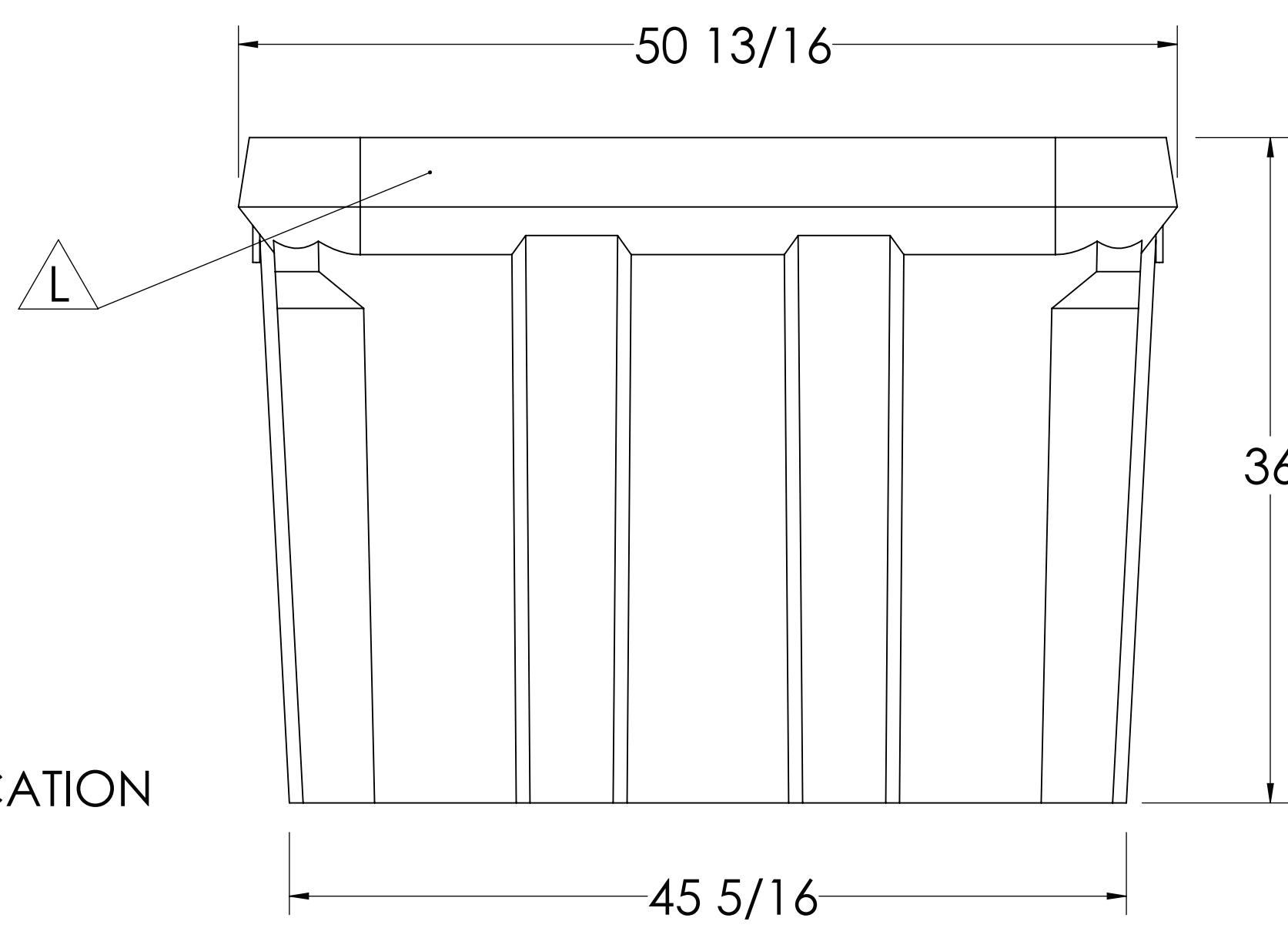
**SECTION A-A**



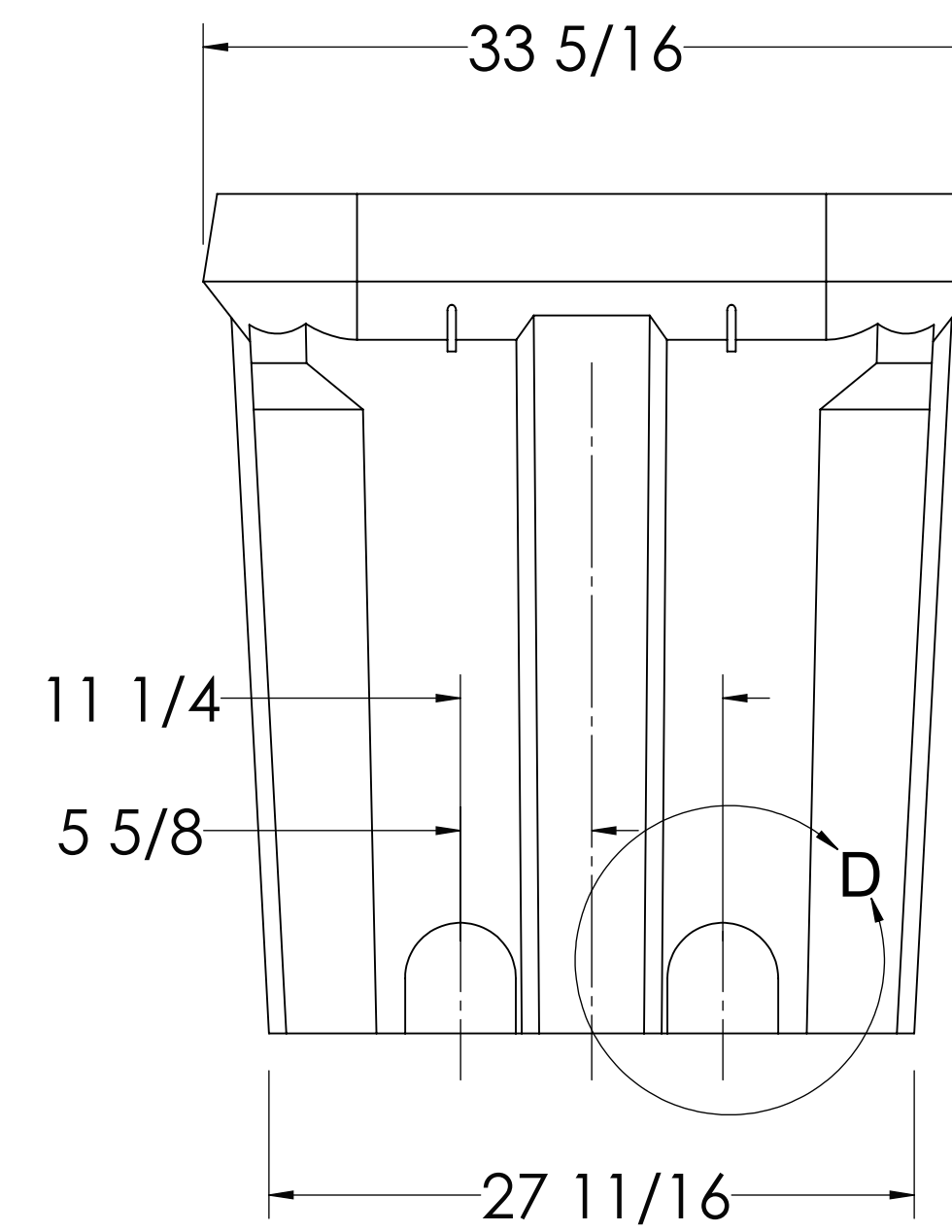
**SECTION B-B**



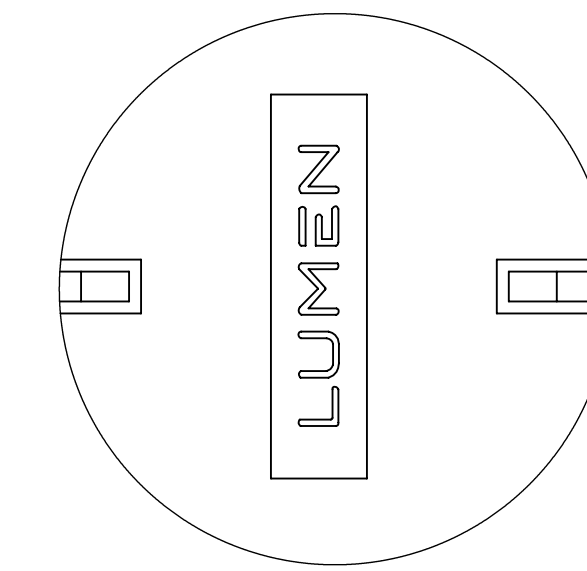
**TOP VIEW**



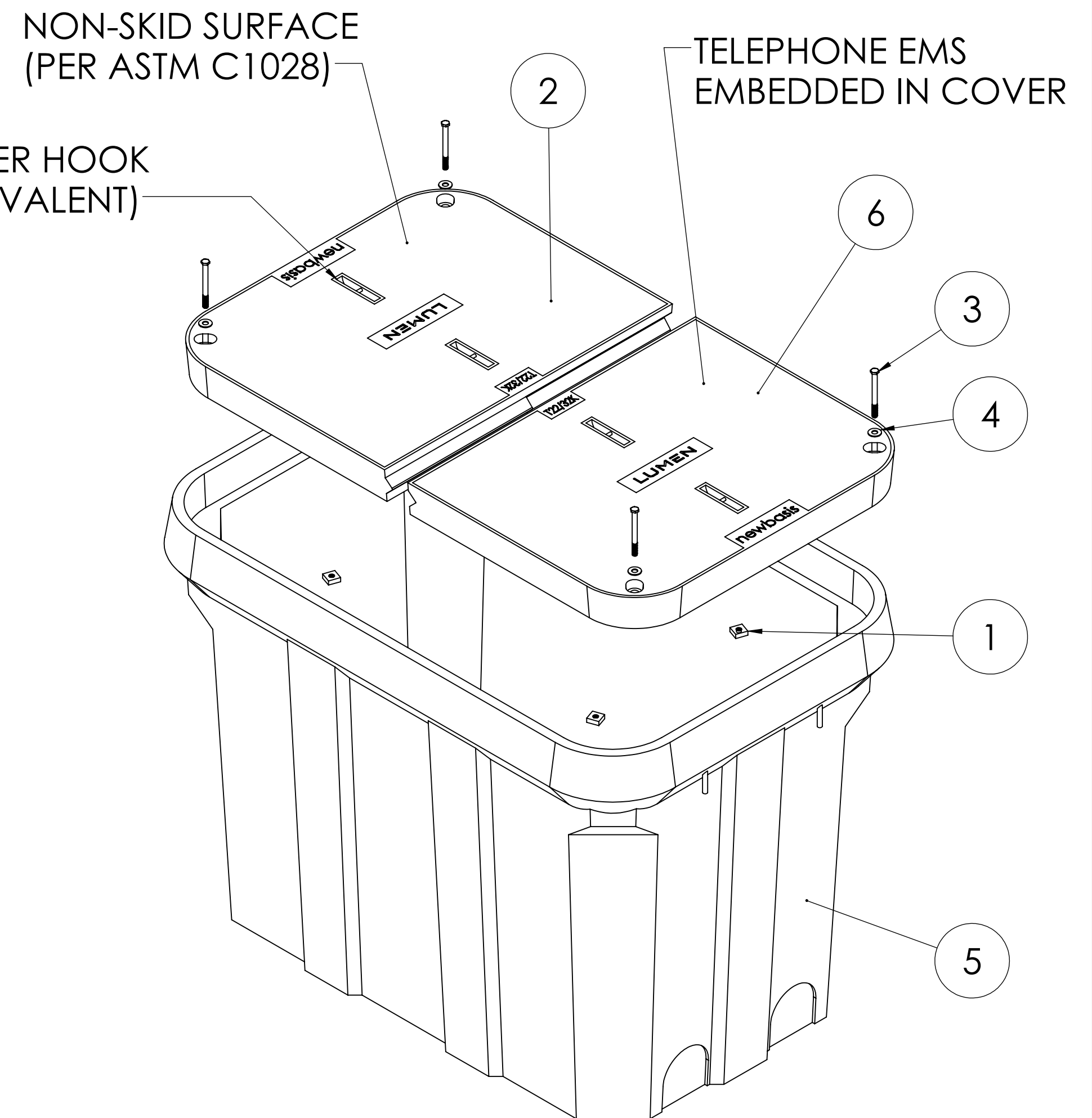
**SIDE VIEW**



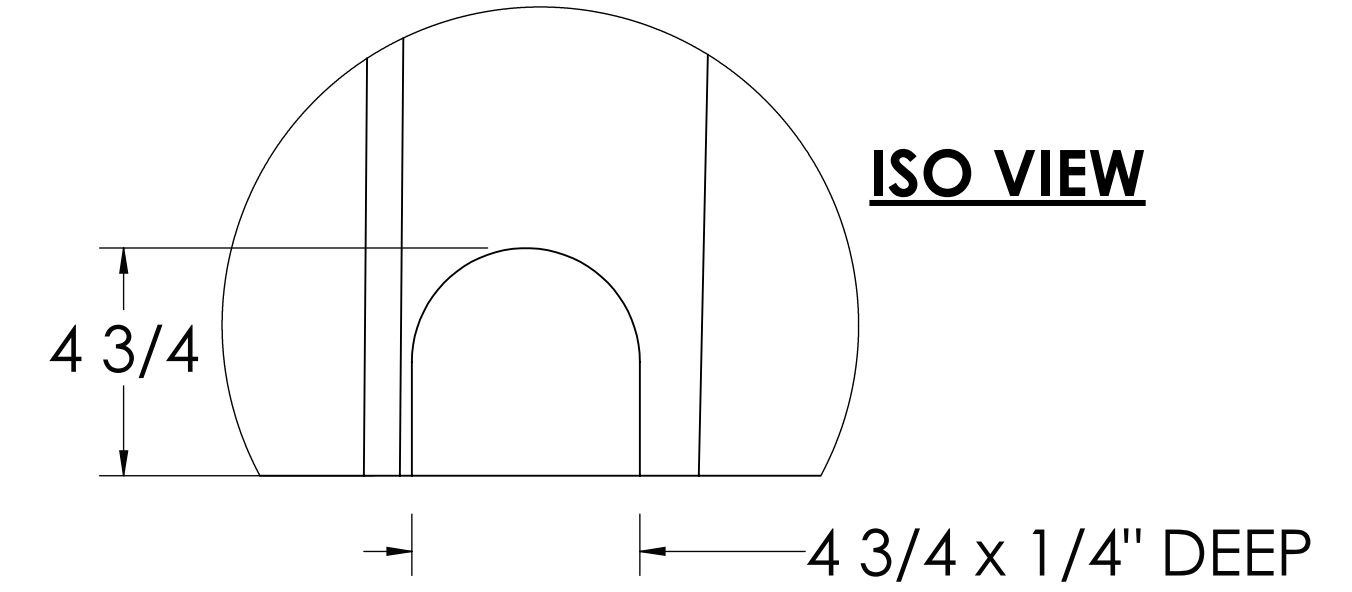
**END VIEW**



**DETAIL C**



**ISO VIEW**



**DETAIL D**

ITEM NO.	PART NUMBER	DESCRIPTION	QTY.
1	0137B	3/8" BRASS NUT	4
2	PCC3048A2CT22-I2570	PC COVER	1
3	0239	3/8" x 4" SS HEX BOLT	4
4	0117	3/8" SS FLAT WASHER	4
5	PCB304836SN20-017	PC BOX w/ MHKOs	1
6	PCC3048A2CT22-I2570T	PC COVER w/ T-EMS	1

UNLESS OTHERWISE SPECIFIED:  
 DIMENSIONS ARE IN INCHES  
 TOLERANCES:  
 FRACTIONAL MOLDED: ±1/16  
 FRACTIONAL FABRICATED: ±1/8  
 ANGULAR: ± 0.5°  
 ONE PLACE DECIMAL: ±.1  
 TWO PLACE DECIMAL: ±.03  
 THREE PLACE DECIMAL: ±.003  
 INTERPRET GEOMETRIC TOLERANCING PER: ASME Y14.5



	NAME	DATE
DRAWN	ABG	9/13/2022
CHECKED / APPROVED		
Q.A.		
MATERIAL:	PC3000	
FINISH:		

**newbasis** 2626 Kansas Ave.  
 Composites for Riverside, CA 92507  
 Infrastructure (951)787-0600  
 newbasis.com  
 DWG. NO. PCA304836SN32-H2MCKN-00001  
 DESCRIPTION: POLYMER CONCRETE ASSEMBLY  
 WEIGHT: \_\_\_\_\_ SIZE D REV NC  
 DO NOT SCALE DRAWING SHEET 1 OF 1