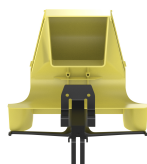


BEST SELLER



FiberRunner® Spill-Over Junction, 4x4, Yellow

FRSPJ4X4LYL

The FiberRunner® 4x4 Spill-Over Junction is used to fully enclose 4x4, 6x4, 12x4, or 24x4 channels. It mounts directly to the existing installation with no alteration required.

Specifications

Application	Data Centers and Telco Central Offices
Product Type	Fiber Routing Spill-Over Junction
Sub Brand	FiberRunner®
Bend Radius (In.)	2
Bend Radius (mm)	50.8
For Use With	4x4, 6x4, 12x4, or 24x4 FiberRunner Channel
Includes	(1) Base Assembly, (1) Throat Cover, (1) Support Bracket, (1) 1/4-20 T-Bolt, (1) 1/4-20 Hex Keps Lock Nut, (2) 1/4- 14 X 1/2 Hex Washer Head Tapping Screws
Material	Polycarbonate/ABS
Overall Height (In.)	6.06
Overall Height (mm)	153.9
Overall Length (In.)	10.79
Overall Length (mm)	274.1
Overall Width (In.)	12.07
Overall Width (mm)	306.6
Standards Met	RoHS Compliant, UL Listed to 2024 Optical Fiber Cable Routing Assemblies Compliant with the applicable tests in Telcordia GR-63-CORE Network Equipment Building Systems Level 3
System Dimensions	4x4
Color	Yellow

Packaging Detail

UPC	61305676438
Std. Pkg. Qty.	1
Std. Pkg. Volume (cf)	0.6347
Std. Ctn. Qty.	0
Std. Ctn. Volume (cf)	0.0000