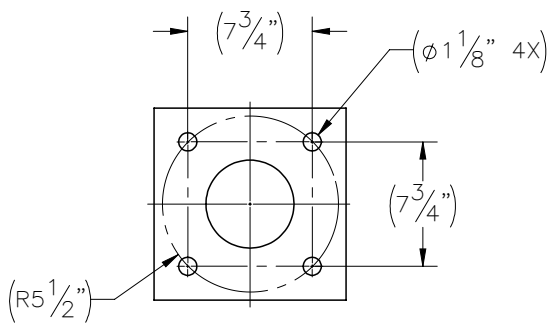
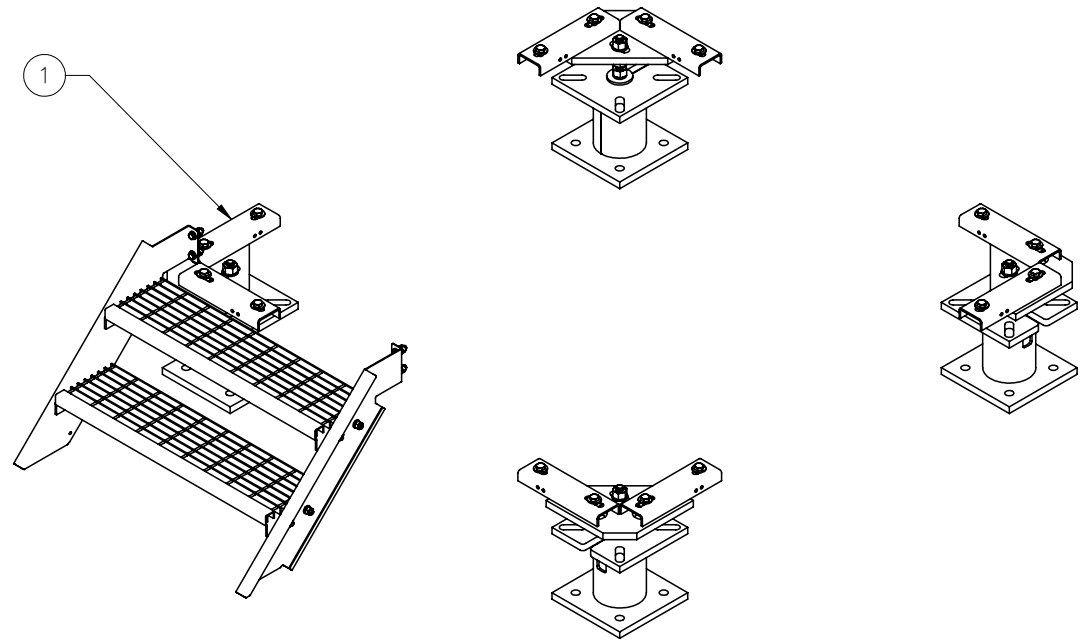
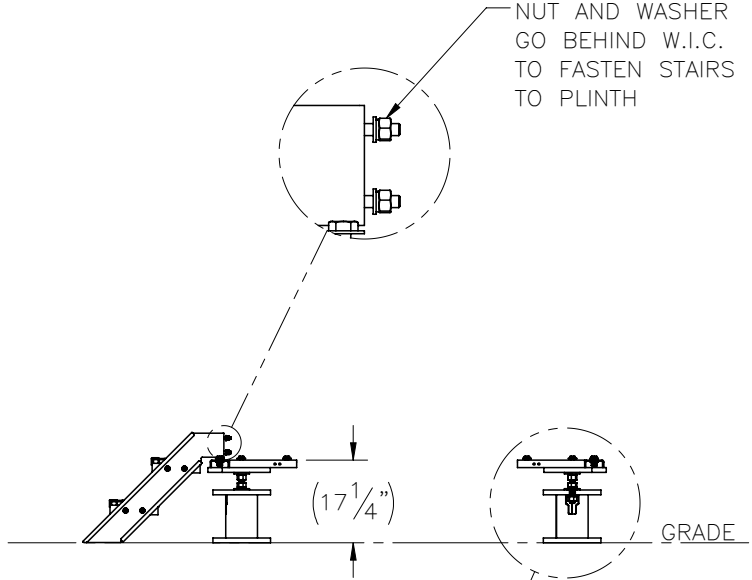
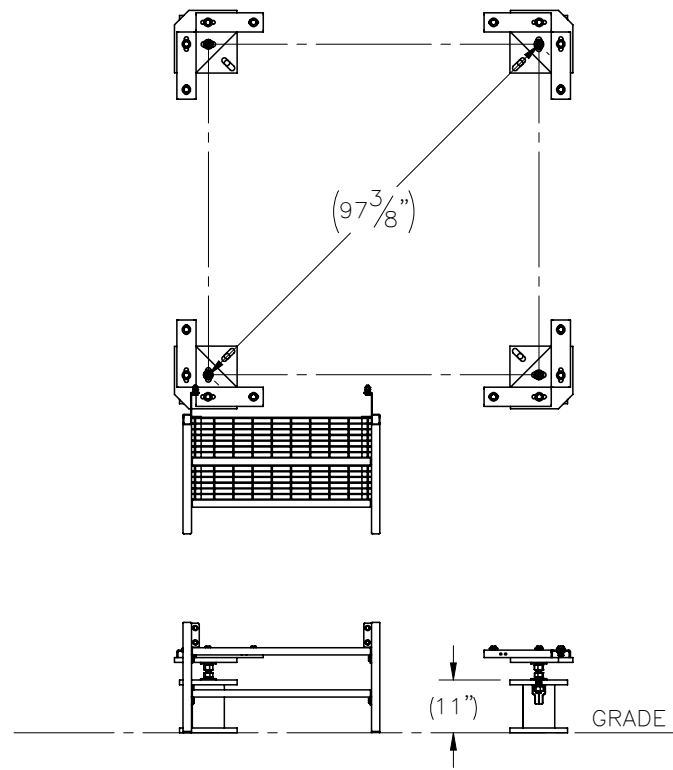
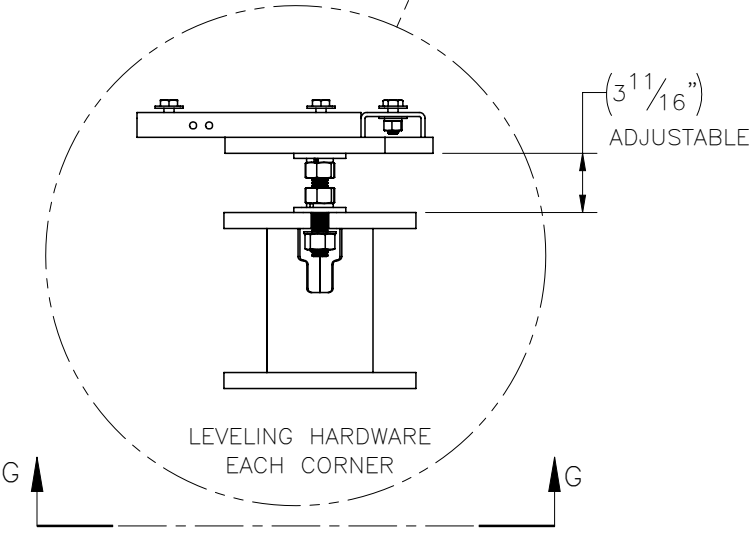


THE INFORMATION CONTAINED IN THIS DRAWING IS THE SOLE PROPERTY OF ELECTRO MECHANICAL INDUSTRIES, INC. ANY REPRODUCTION IN PART OR WHOLE WITHOUT THE WRITTEN PERMISSION OF ELECTRO MECHANICAL IND., IS PROHIBITED.


REVISIONS					
REV.	DCN #	DESCRIPTION	DATE	BY	APPROVED
6	01053	ALL COMPONENTS REPLACED WITH EQUIVALENT ASSY	6/18/2021	JPB	FJM



CONCRETE ANCHOR LAYOUT
SECTION G-G
MINIMUM ANCHOR SIZE: 5/8"
MAXIMUM ANCHOR SIZE: 1"



ITEM NO.	QTY REQD	PART NUMBER	DESCRIPTION	LENGTH	WEIGHT
1	1	1000-0010-0112	CONCRETE MOUNT FOUNDATION KIT		606

SURFACE FINISH	UNLESS OTHERWISE SPECIFIED	UNLESS OTHERWISE SPECIFIED DIMENSIONS ARE IN INCHES	APPROVALS	DATE	 ELECTRO MECHANICAL INDUSTRIES, INC. 11230 NEESESHAW DRIVE HOUSTON, TEXAS 77065 1-800-453-0050
MATERIAL	SEE PARTS LIST	TOLERANCES	DRAWN	4/12/2018	
THIRD ANGLE PROJECTION		FRACTIONS ± 1/16	CHECKER	5/2/2018	
		ANGLES ± .25°	ENGINEER	5/2/2018	
NEXT ASSY	USED ON	HOLES: DRILLED OR PUNCHED ± 1/32	PRODUCTION	5/2/2018	TITLE: CONCRETE MOUNT FOUNDATION KIT
APPLICATIONS		BURNED ± 1/32	J. SUNDERLAND		

SIZE	DRAWING NO.	REV
B	1007-0000-0012	6

SCALE: 1:40	WEIGHT: 606 lbs.	SHEET 1 OF 1
-------------	------------------	--------------