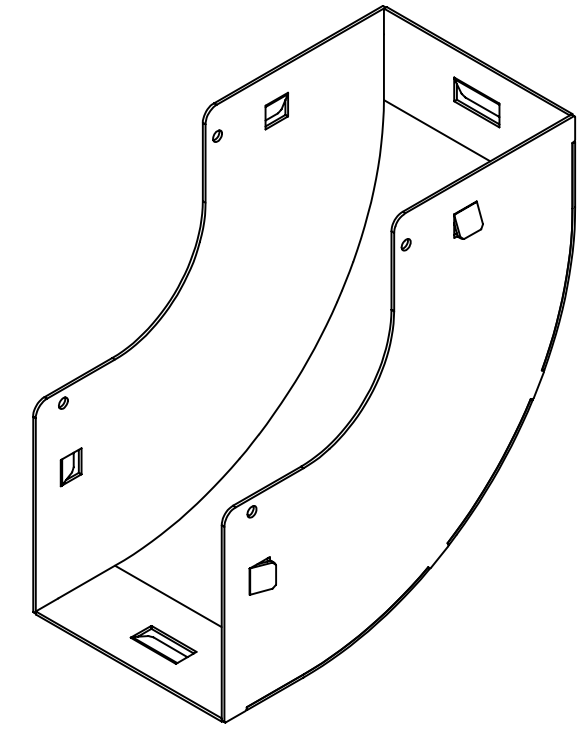
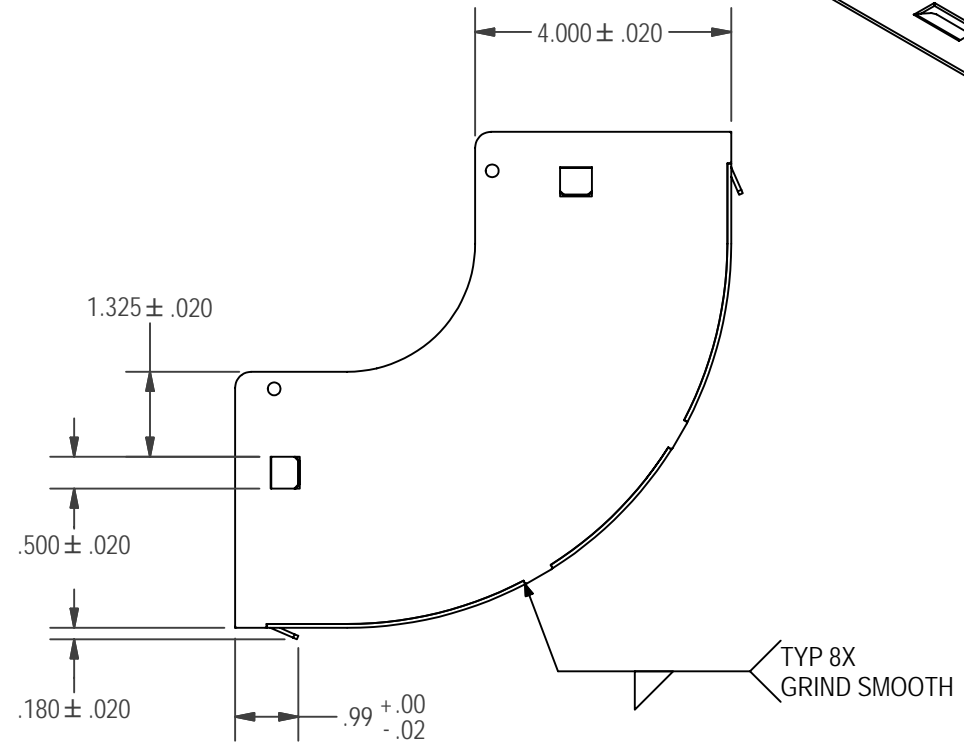
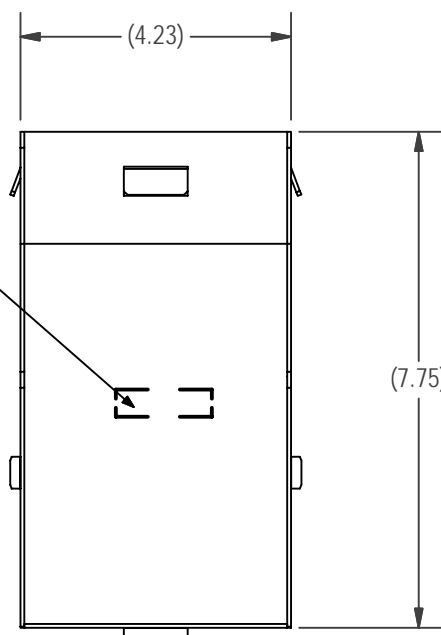
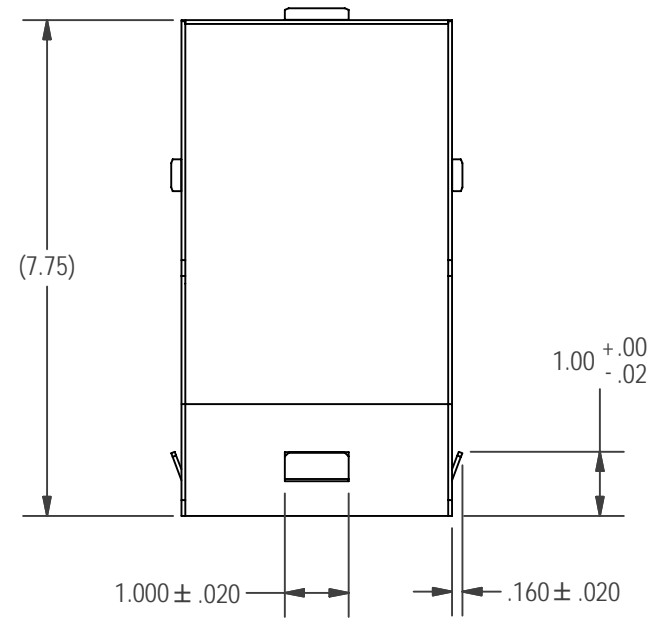


NOTES: (UNLESS OTHERWISE SPECIFIED.)

1. CONFORM TO ALL APPLICABLE TELECT WORKMANSHIP STANDARDS.
2. DIMENSIONS AND TOLERANCES PER ANSI Y14.5M.
3. MATERIAL: 16 GA (.060) 5052 ALUMINUM.
4. BEND RELIEF SHALL BE A MAXIMUM OF TWICE THE MATERIAL THICKNESS UNLESS OTHERWISE SPECIFIED.
5. RACK/HANGER MARKS TO BE CONTAINED WITHIN A HOLE OR SLOT.
6. ALL BENDS ARE 90° UNLESS OTHERWISE SPECIFIED.
7. ALL DIMENSIONS ARE AFTER POWDER COAT.
8. THE 3D CAD FILE IS THE CONTROLLING DOCUMENT FROM WHICH THIS PART MUST BE FABRICATED. DIMENSIONS SHOWN WILL BE USED AS INSPECTION/PROCESS DIMENSIONS. USE THE FOLLOWING TOLERANCES FOR FABRICATION OF THE PART IN CONJUNCTION WITH THE CAD FILE FOR DIMENSIONS AND FEATURES NOT SPECIFIED
 HOLE TO HOLE: ± 0.010
 EDGE TO HOLE: ± 0.010
 FOLD TO HOLE: ± 0.010
 EDGE TO EDGE: ± 0.010
 FOLD TO EDGE: ± 0.010
 FOLD TO FOLD: ± 0.020
 HOLE SIZE: ± 0.010
 ANGULARITY: ± 1°
9. ALL DIMENSIONS ARE IN INCHES.



| REV | ECO | DESCRIPTION | DATE | BY |
|------|-----|---------------------------------------|---------|----|
| A0 | N/A | CREATED FROM 123286 AND 027-1000-4473 | 7/18/06 | SX |
| A0.1 | N/A | ADDED LABEL LOCATION NOTE | 7/18/06 | SX |

| | | |
|----------------|-----------------|----------------|
| WT4E-90UP-BLK | 549 BLACK | POWDER COAT |
| FINISH PART NO | BASE PART COLOR | FINISH COATING |

| | | | |
|--|------------------|--|------------|
| DESIGNED BY B WERNER | DATE 2/1/2001 | Telect [®] N 2111 Molter Road PO Box 665 Liberty Lake, Washington 99019 (509) 926-6000 CONNECTING THE FUTURE | |
| DRAWN BY S. XIN | DATE 7/18/06 | | |
| NOT FOR REPRODUCTION COPYRIGHT: 2006 This document contains proprietary information that is property of TELECT, INC., Spokane, Washington. It is intended for the exclusive use of our customer for information, installation, and/or service. The recipient agrees not to reproduce or copy this document or its contents in whole or in part without prior written permission from TELECT, INC. This document must be returned promptly if no longer needed or upon written request from TELECT, INC. | | TITLE CUSTOMER/SPECIFICATION DRAWING UPSWEEP: 4", 90 DEG, TRAX | |
| DRAWING NO WT4E-90UP-BLK | | SHEET SIZE B | ISSUE A |
| PROJECT F163 | SCALE N/A | SHEET 1 OF 1 | REV 0 |