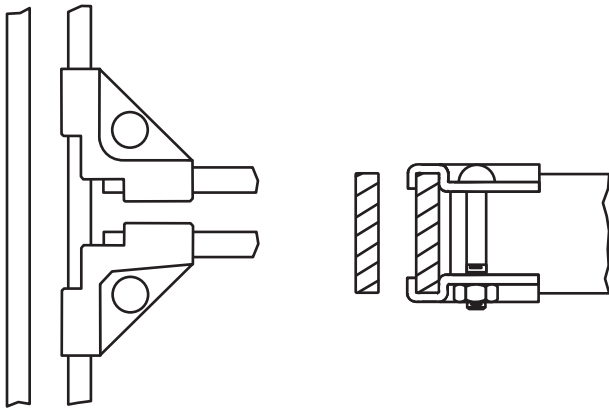


PARALLEL AUXILIARY FRAMING BAR "T" JUNCTION WITH CORNER CLAMPS

Modified:07/17/2014



Ordering Table

Part Number

00102400xx

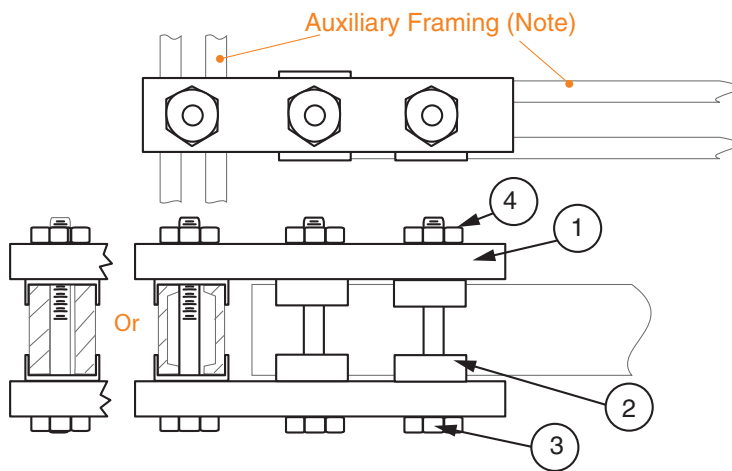
Stock List

Item	QTY	Description
1	4	Splice Clamp
2	2	3/8"-16 X 2" Bolt
3	2	3/8"-16 Nut

Notes:

- Finish is zinc plated and gold chromate, finish code 10.
- Not included; refer to 001021.

PARALLEL AUXILIARY FRAMING CHANNEL OR BAR "T" JUNCTION WITH SPLICE BAR



Ordering Table

Part Number	Aux
00102401xx	Channel
00102403xx	Bar

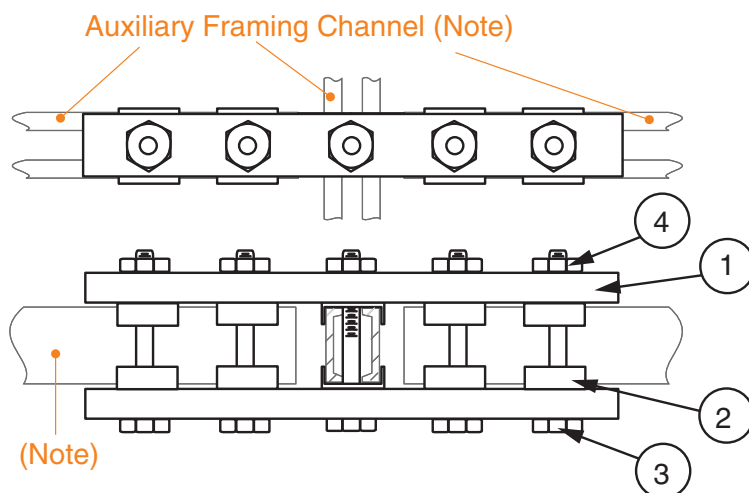
Stock List

Item	QTY	Description
1	2	Splice Bar
2	6	Clip
3	3	5/8-11 X 3-3/4" HHCS
4	3	5/8-11 Hex Nut

Notes:

- Finish is zinc plated and gold chromate, finish code 10.
- Not included; refer to 001022 or 001021.

PARALLEL AUXILIARY FRAMING CHANNEL "X" JUNCTION WITH SPLICE BAR



Ordering Table

Part Number

00102402xx

Stock List

Item	QTY	Description
1	2	Splice Bar
2	10	Clip
3	5	5/8-11 X 3-3/4" HHCS
4	5	5/8-11 Hex Nut

Notes:

- Finish is zinc plated and gold chromate, finish code 10.
- Not included; refer to 001022.