

SPLICER SCISSORS & KNIVES

Telecommunication, Electronic and Electrical wiring jobs



Manufactured for exceptional performance, Jameson splicer scissors are heat treated then ice tempered (cryogenically processed) for a longer lasting edge and precision ground for consistent quality.

Snip Grip® Ergonomic Handle

- Increases cutting leverage while reducing hand and wrist fatigue
- Fits any manufacturer's standard 5" electrical scissors
- Sold separately or with Jameson scissors

Splicer Skinning Knife

Straight style blade is molded into an easy-grip polymer handle that remains pliable in subzero temperatures.

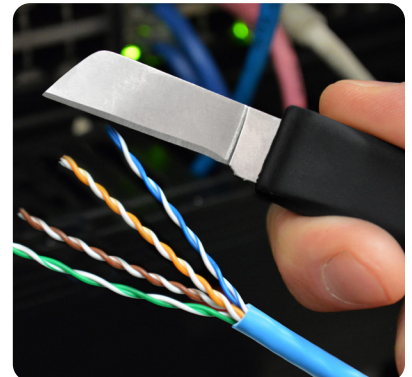
- Blade is heat treated then ice tempered for a long lasting edge
- 20-25% thicker than comparable models.



SCISSORS

Notched, serrated blade for removing wire jackets

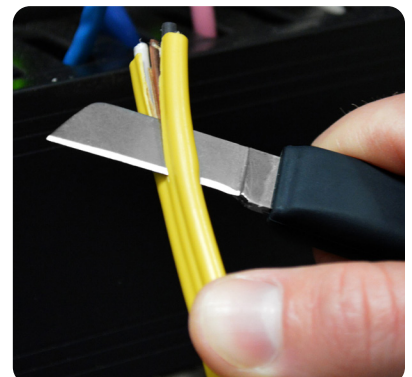
| Part Number | Description |
|-------------|----------------------------------|
| 32-21NS | Splicer Snip, Notched & Serrated |



SCISSORS WITH SNIP GRIP

Ergonomic handle increases cutting leverage, reduces hand and wrist fatigue

| Part Number | Description |
|-------------|---|
| 32-40 | Snip Grip® Ergonomic Handle |
| 32-41NS | 5-1/4" Electrician Scissors with Snip Grip® |



SKINNING KNIFE

Straight blade Ergonomic handle for easier grip

| Part Number | Description |
|-------------|--|
| 32-24E | Cable Splicers Knife, 6-1/4" with 1-1/2" blade, Ergonomic Handle |



SKINNING KNIFE

Straight blade

| Part Number | Description |
|-------------|----------------------------|
| 32-24J | Knife with Straight Handle |



SPLICER KITS

Jameson leather and PVC belt pouches keep splicing tools close at hand.

Leather pouches are reinforced with steel rivets for durability. Available with slotted openings or tunnel loop to slide on belt.

Black PVC pouches will not split or tear with age and remain flexible, even in cold weather.

LEATHER TOOL POUCHES

Genuine rawhide leather with steel rivets

| Part Number | Description |
|-------------|------------------------------------|
| 32-11 | Knife with Straight Handle |
| 32-12 | Slotted Leather Pouch for Scissors |
| 32-25 | Slotted Leather Pouch For Knife |
| 32-11T | Tunnel Loop Leather Pouch |



32-11



32-12



32-25



32-11T

| Part Number | Description |
|-------------|--|
| 32-15T | Tunnel Loop Leather Pouch Snip Grip® Scissors, and Splicer Knife |
| 32-30 | Adjustable Belt for Tool Pouches |



32-15T



32-30

INSTALLERS KIT

Electrician and Cable Installer Kits

| Part Number | Description |
|--------------|--|
| 32-12NS | Electrician Splicer Scissors, 5-1/4 in. with Slotted Leather Pouch (2-Piece) |
| 32-22NS | Cable Splicer's Kit, Slotted Leather Pouch (3-Piece) |
| 32-23NS | Cable Splicer's Kit, Slotted Leather Pouch (3-Piece) |
| 32-42NS | Cable Splicer's Kit, Slotted Leather Pouch (3-Piece) |
| 32-43NS | Cable Splicer's Kit, 5-1/4" with Tunnel Loop Leather Pouch (3-Piece) |
| 32-16NS-216C | Telecommunications Cable Splicer's Kit (4-Piece) |



32-12NS



32-22NS



32-23NS



32-42NS



32-43NS



32-16NS-216C

BLADE SHARPENER

Scissors and Knife Sharpener

