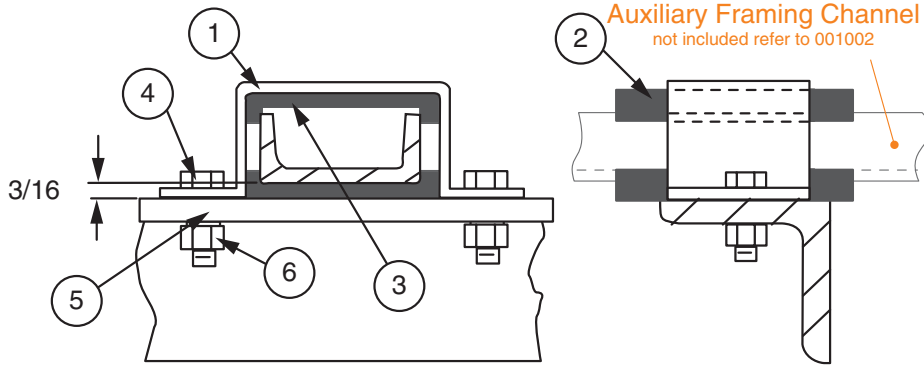


INSULATING AUXILIARY FRAMING CHANNEL FROM TOP ANGLE OR WALL ANGLE

Modified:07/14/2014



Ordering Table

Part Number

00105300xx

Stock List

Item	QTY	Description
1	1	Bracket
2	2	Insulator -- <i>see note</i>
3	1	Shim Plate
4	2	3/8"-16 X 7/8" HHCS
5	2	3/8" Lock Washer
6	2	3/8"-16 Hex Nut

Notes:

- Finish is zinc plated and gold chromate, finish code 10.
- Insulator material is rated U.L. 94 V-1 and has an oxygen index rating of greater than 29.