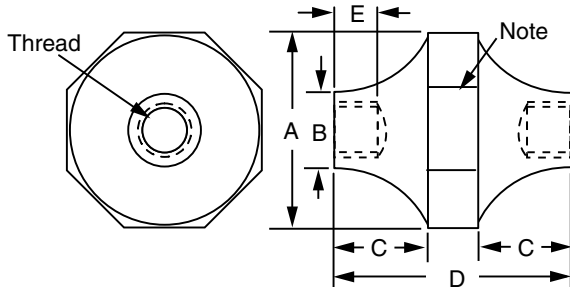


MOLDED POLYESTER-FIBERGLASS INSULATOR

Sales Sheet Modified:06/28/2022



Ordering Table

Part Number	A	B	C	D	E	Thread
0030610100	2"	1-1/4"	11/16"	1-1/2"	1/2"	1/4-20"
0030610200	2"	1-1/4"	11/16"	1-1/2"	9/16"	3/8-16"
0030610400	2-5/8"	1-1/2"	1-1/4"	2-3/4"	3/4"	5/8-11"
0030610500	2-1/2"	1-3/8"	1-1/8"	2-5/8"	3/4"	5/8-11"
2057750600	2"	1-1/8"	5/8"	2-1/4"	5/8"	1/2-13"

Notes:

- Insulator shape may vary from that shown dimensions are nominal, and may vary depending on shape.
- The shoulder may be round or octagonal.
- This is a thermoset part with highly glass filled material. File marks are common and will not affect the part performance in any way.